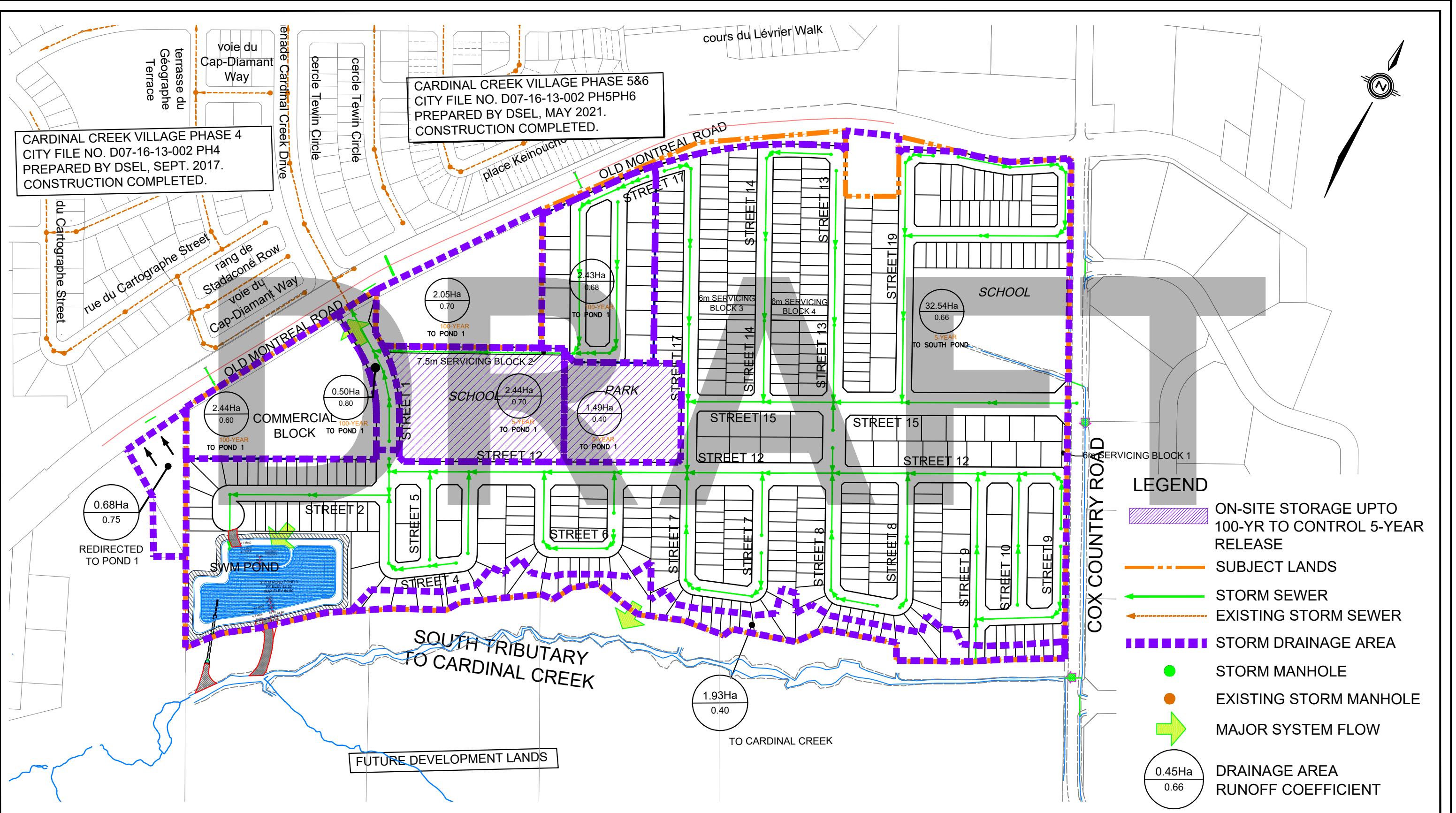


CARDINAL CREEK VILLAGE PHASE 5&6  
 CITY FILE NO. D07-16-13-002 PH5PH6  
 PREPARED BY DSEL, MAY 2021.  
 CONSTRUCTION COMPLETED.

CARDINAL CREEK VILLAGE PHASE 4  
 CITY FILE NO. D07-16-13-002 PH4  
 PREPARED BY DSEL, SEPT. 2017.  
 CONSTRUCTION COMPLETED.



- LEGEND**
- ON-SITE STORAGE UPTO 100-YR TO CONTROL 5-YEAR RELEASE
  - SUBJECT LANDS
  - STORM SEWER
  - EXISTING STORM SEWER
  - STORM DRAINAGE AREA
  - STORM MANHOLE
  - EXISTING STORM MANHOLE
  - MAJOR SYSTEM FLOW
  - DRAINAGE AREA RUNOFF COEFFICIENT



120 Iber Road, Unit 103  
 Stittsville, ON K2S 1E9  
 TEL: (613) 836-0856  
 FAX: (613) 836-7183  
 www.DSEL.ca

**POND DRAINAGE PLAN  
 CARDINAL CREEK VILLAGE SOUTH**

PROJECT No.:	19-1153
SCALE:	1:4000
DATE:	OCTOBER 2024
FIGURE:	10