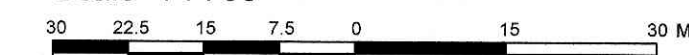


560 DEALERSHIP DRIVE  
BEING PART OF LOT 17  
CONCESSION 4 (RIDEAU FRONT)  
GEOGRAPHIC TOWNSHIP OF NEPEAN  
CITY OF OTTAWA

Prepared by Annis, O'Sullivan, Vollebek Ltd.  
Field Work Completed December 23, 2020

Scale 1 : 750



Metric

DISTANCES SHOWN ON THIS PLAN ARE IN METRES AND  
CAN BE CONVERTED TO FEET BY DIVIDING BY 0.3048

JAN 25 2021  
Date  
E. H. Herweyer  
Ontario Land Surveyor

Notes & Legend

- Denotes
- ⊙ FH = Fire Hydrant
  - ⊠ T-P = Test Pit
  - ⊙ W = Water Valve
  - T/G = Top of Grate
  - Inv.E = Invert East
  - GE = Location of Ground Elevations
  - BOS = Bottom of Slope
  - TOS = Top of Slope
  - SRW = Stone Retaining Wall
  - EP = Edge of Pavement
  - MF = Metal Fence
  - PWF = Post and Wire Fence
  - ⊙ FP = Flag Pole
  - ⊙ LS = Light Standard
  - ⊙ MH-ST = Maintenance Hole (Storm Sewer)
  - ⊙ MH-S = Maintenance Hole (Sanitary)
  - ST = Underground Storm Sewer
  - S = Underground Sanitary Sewer
  - W = Underground Water
  - +65.00 = Location of Elevations
  - +65.00 = Top of Wall Elevation
  - = Property Line

Caution  
This is NOT a Plan of Survey and shall not be used except for the purpose indicated in the title block.

SITE AREA = 6.3237 Ha.

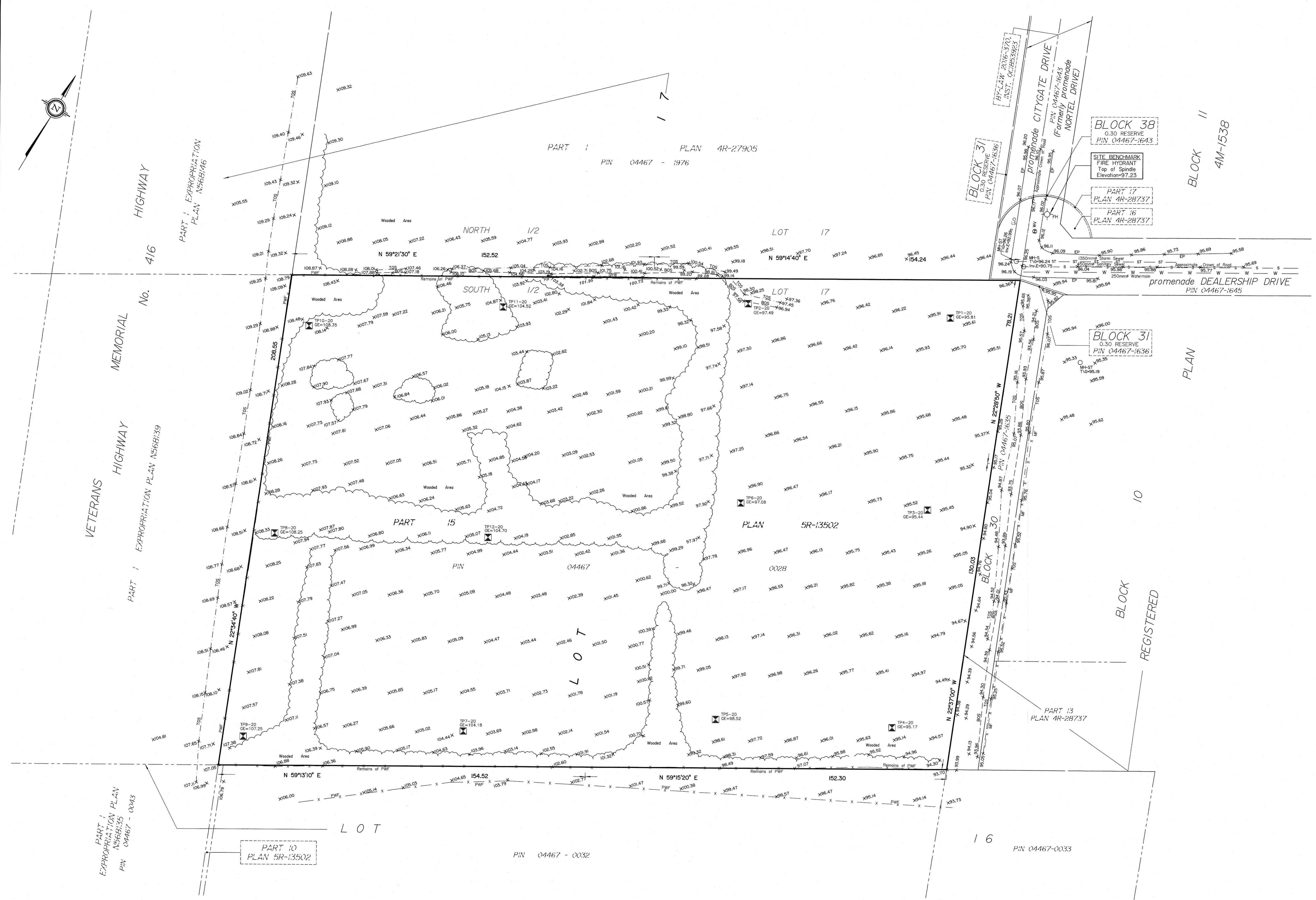
BOUNDARY INFORMATION COMPILED FROM  
REGISTERED PLAN 4M-1538, PLANS 4R-27905, 5R-13502  
AND SURVEY RECORDS.

ELEVATION NOTES

1. Elevations shown are geodetic and are referred to the CGVD28 geodetic datum, derived from control monument No. 00820118014, having a published elevation of 103.306m.
2. It is the responsibility of the user of this information to verify that the job benchmark has not been altered or disturbed and that its relative elevation and description agrees with the information shown on this drawing.

UTILITY NOTES

1. This drawing cannot be accepted as acknowledging all of the utilities and it will be the responsibility of the user to contact the respective utility authorities for confirmation.
2. Only visible surface utilities were located.
3. A field location of underground plant by the pertinent utility authority is mandatory before any work involving breaking ground, probing, excavating etc.
4. Sanitary and Storm Sewer grades and inverts were taken from a Plan by Farley, Smith & Denis Surveying Ltd. dated June 9, 2018.
5. Underground Utility Data derived from City of Ottawa utility sheet drawing no. 109203-CG-P5 & 109203-CG-P6.



PART 1  
EXPROPRIATION PLAN  
N5668135  
PIN 04467-0043

PART 1  
EXPROPRIATION PLAN  
N5668146

PART 1  
EXPROPRIATION PLAN  
N5668139

PART 10  
PLAN 5R-13502

PIN 04467-0032

PIN 04467-0033

BLOCK 38  
0.30 RESERVE  
PIN 04467-1643

BLOCK 31  
0.30 RESERVE  
PIN 04467-1636

PART 13  
PLAN 4R-28737

PLAN 5R-13502

PART 17  
PLAN 4R-28737

PART 16  
PLAN 4R-28737

Promenade DEALERSHIP DRIVE  
PIN 04467-1645

Promenade CITYGATE DRIVE  
PIN 04467-1643  
(Formerly Promenade NORTEL DRIVE)

BLOCK 30  
N 22°29'00" W  
PIN 04467-1635

BLOCK 10  
REGISTERED

BLOCK 11  
4M-1538

PLAN

10

REGISTERED

16

17

15

10

16