

I REQUIRE THIS PLAN TO BE DEPOSITED UNDER THE LAND TITLES ACT.
 DATE: April 12/18
 ANDREW SNEY
 ONTARIO LAND SURVEYOR

RECEIVED AND DEPOSITED DATE: April 12/18
 B. Coates
 REPRESENTATIVE FOR LAND REGISTRY FOR THE LAND TITLES DIVISION OF OTTAWA-CARLETON NO. 4.

SCHEDULE		
PART	LOT	CONCESSION
1		
2		
3		
4		
5	PART OF 5	2 (Rideau Front)
6		
7		
8		
9		
10		
11		

Distances shown on this plan are ground distances and can be converted to grid distances by multiplying by the combined scale factor of 0.99993.

Bearings are grid, derived from the southerly limit of Part 20 Plan 4R-17317, shown hereon, having a bearing of N59°06'50"W shown on Expropriation Plan NS187075 and are referenced MTM Zone 9 (76°30' West Longitude) NAD-83 (original).

Coordinates are derived from Can-Ned 2016 Real Time Network GPS observations referenced to Specified Control Points 01919791338 and 01919871649, MTM Zone 9 (76°30' West Longitude) NAD-83 (original).

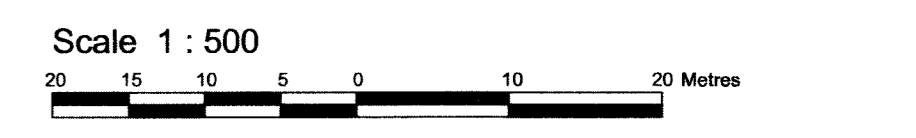
Coordinate values are to urban accuracy in accordance with O. Reg. 216/10.

01919791338 Northing 5006055.96 Easting 346140.91
 01919871649 Northing 5007188.87 Easting 372435.06
 Point A Northing 5021943.80 Easting 367629.24
 Point B Northing 5022222.16 Easting 368096.84

Caution: Coordinates cannot, in themselves, be used to re-establish corners or boundaries shown on this plan.

Part 2 is Subject to Easement Inst. OC109043.
 Parts 4, 7, 8, 9 and 11 are Subject to Easement Inst. OC689199.
 Parts 6, 7 and 8 are Subject to Easement Inst. OT38006.

PLAN OF SURVEY OF
 CONCESSION 2 (RIDEAU FRONT)
 Geographic Township of Gloucester
 CITY OF OTTAWA
 Surveyed by Annis, O'Sullivan, Vollebek Ltd.



Metric DISTANCES AND COORDINATES SHOWN ON THIS PLAN ARE IN METRES AND CAN BE CONVERTED TO FEET BY DIVIDING BY 0.3048.

Surveyor's Certificate
 I CERTIFY THAT:
 1. This survey and plan are correct and in accordance with the Surveys Act, the Surveyors Act and the Land Titles Act and the regulations made under them.
 2. The survey was completed on the 30th day of January, 2018.

Date: Jan 30/18
 Andrew Sney
 Ontario Land Surveyor

- Notes & Legend
- Denotes Survey Monument Planted
 - Denotes Survey Monument Found
 - SSB Standard Iron Bar
 - SSIB Short Standard Iron Bar
 - IB Iron Bar
 - (WIT) Witness
 - (AOG) Annis, O'Sullivan, Vollebek Ltd.
 - Meas. Measured
 - (P1) Plan 4R-17317
 - (P2) Plan 4R-21282
 - (P3) Expropriation Plan NS187075
 - (P4) Plan 4R-21548

