

Bearings are grid, derived from Can-Net 2016 Real Time Network GPS observations on reference points A and B, shown hereon, having a bearing of Nxx°xx'xx"W and are referenced to Specified Control Points 01919791338 and 01919871649, MTM Zone 9 (78°30' West Longitude) NAD-83 (original).

Coordinate values are to urban accuracy in accordance with O. Reg. 216/10.
 .01919791338 Northing 5006055.96 Easting 346140.91
 .01919871649 Northing 5007189.87 Easting 372435.05

For comparison purposes, a rotation of 0°31'50" counter clockwise was applied to bearings on plans P1, P2, and P3.

ELEVATION NOTES
 1. Elevations shown are geoidetic and are referred to the CGVD28 geoidetic datum.
 2. It is the responsibility of the user of this information to verify that the job benchmark has not been altered or disturbed and that its relative elevation and description agrees with the information shown on this drawing.

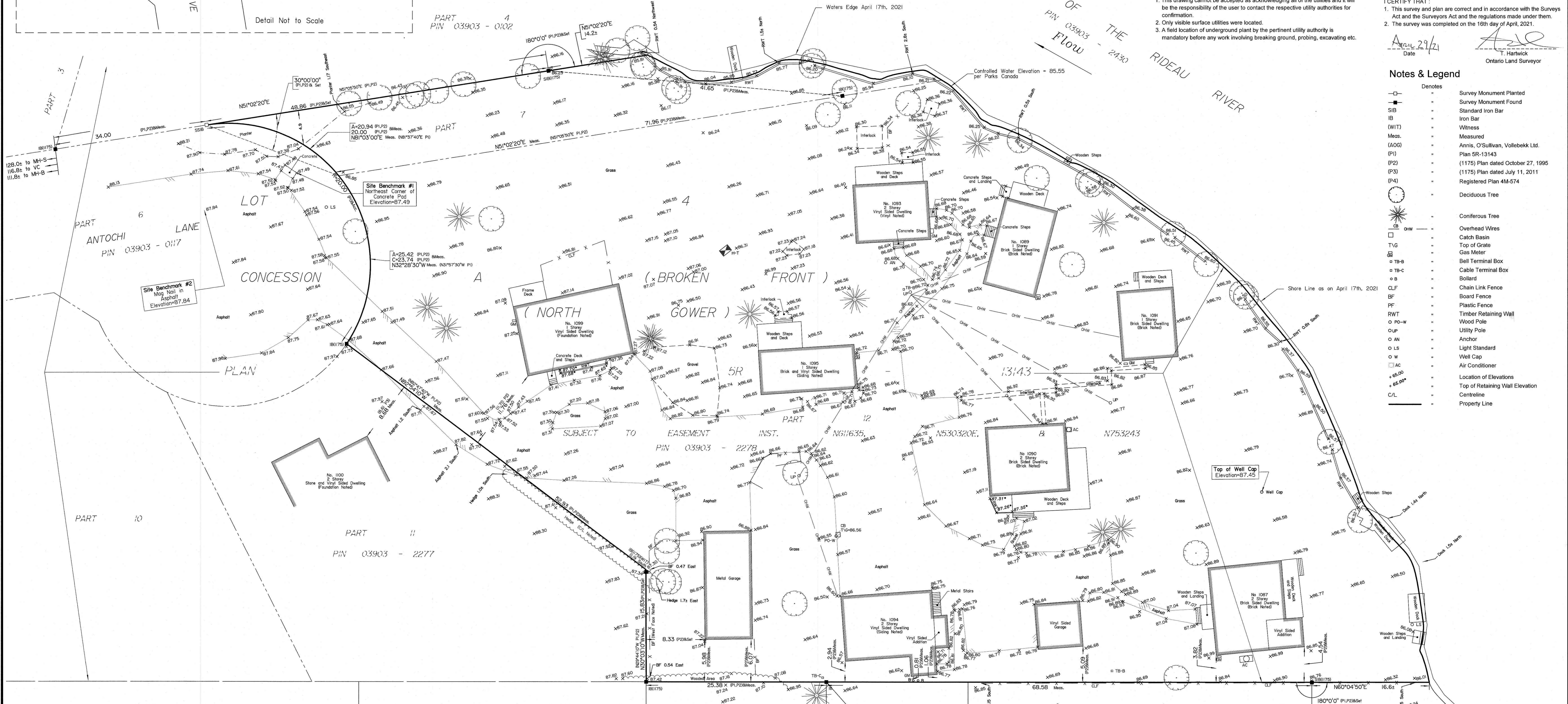
UTILITY NOTES
 1. This drawing cannot be accepted as acknowledging all of the utilities and it will be the responsibility of the user to contact the respective utility authorities for confirmation.
 2. Only visible surface utilities were located.
 3. A field location of underground plant by the pertinent utility authority is mandatory before any work involving breaking ground, probing, excavating etc.

TOPOGRAPHIC PLAN OF SURVEY OF PART OF LOT 4 CONCESSION A (BROKEN FRONT) GEOGRAPHIC TOWNSHIP OF NORTH GOWER CITY OF OTTAWA
 Surveyed by Annis, O'Sullivan, Vollebek Ltd.
 Scale 1:250
 Metric
 DISTANCES SHOWN ON THIS PLAN ARE IN METRES AND CAN BE CONVERTED TO FEET BY DIVIDING BY 0.3048

Surveyor's Certificate
 I CERTIFY THAT:
 1. This survey and plan are correct and in accordance with the Survey Act and the Surveyors Act and the regulations made under them.
 2. This survey was completed on the 16th day of April, 2021.
 Date April 29/21
 T. Hartwick
 Ontario Land Surveyor

Notes & Legend

Denotes	
—□—	Survey Monument Planted
—■—	Survey Monument Found
—IB—	Standard Iron Bar
—IB—	Iron Bar
(WIT)	Witness
Meas.	Measured
(AOG)	Annis, O'Sullivan, Vollebek Ltd.
(P1)	Plan 5R-13143
(P2)	(1175) Plan dated October 27, 1995
(P3)	(1175) Plan dated July 11, 2011
(P4)	Registered Plan 4M-574
○	Deciduous Tree
⊙	Coniferous Tree
—○—	Overhead Wires
□	Catch Basin
T/G	Top of Grate
⊙	Gas Meter
⊙	Ball Terminal Box
⊙	Cable Terminal Box
⊙	Bollard
CLF	Chain Link Fence
BF	Board Fence
PF	Plastic Fence
RWT	Timber Retaining Wall
○ PO-W	Wood Pole
○ UP	Utility Pole
○ AN	Anchor
○ LS	Light Standard
○ W	Well Cap
○ AC	Air Conditioner
+ 65.00	Location of Elevations
+ 65.00	Top of Retaining Wall Elevation
—C/L—	Centreline
—	Property Line



PLAN SUBJECT TO EASEMENT INST. 5559 L7487633
 LOT 7 REGISTERED
 LOT 6 PLAN PIN 03903 - 1268
 BLOCK 10 PIN 03903 - 1272
 BLOCK 9 PIN 03903 - 1271
 4M - 574
 ASSOCIATION OF ONTARIO LAND SURVEYORS PLAN SUBMISSION FORM V-11489
 THIS PLAN IS NOT VALID UNLESS IT IS AN EMBOSSED ORIGINAL COPY ISSUED BY THE SURVEYOR In accordance with Regulation 1026, Section 29 (3).
 © Annis, O'Sullivan, Vollebek Ltd. 2021. THIS PLAN IS PROTECTED BY COPYRIGHT.
 ANNIS, O'SULLIVAN, VOLLEBEK LTD.
 14 Concourse Gate, Suite 500
 Nepean, Ont. K2E 7S6
 Phone: (613) 727-0850 / Fax: (613) 727-1079
 Email: info@anniso.com
 Ontario Land Surveyors (Lic. No. 21236-20) P.O. Box 154, Cornwall, ON K6J 1T1