

SCHEDULE						R.M.O.C. OFFICE USE ONLY		
PART	PARCEL	SECTION	LOT	CONCESSION	REMARKS	GROUND AREA	ACQUIRED BY	DEDICATED BY
1	6412	CARLETON	20	JUNCTION GORE	Part of Part 7 Plan 4R-699	30.0 m ²		
2	6967				Part of Part 8 Plan 4R-699	20.0 m ²		

PLAN 4R-4802

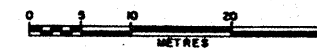
RECEIVED AND DEPOSITED

3 JANUARY 1985

J. Coyle Day
LAND REGISTRAR FOR THE
LAND TITLES DIVISION OF
OTTAWA-CARLETON No. 4.

OC-4434

PLAN OF SURVEY OF
PART OF LOT 20, JUNCTION GORE
FORMERLY IN THE TOWNSHIP OF GLOUCESTER
NOW WITHIN THE LIMITS OF THE
CITY OF OTTAWA
REGIONAL MUNICIPALITY OF OTTAWA-CARLETON
SCALE 1 : 500



SURVEYED BY J. J. BRUN, O.L.S.
1984.

NOTES and LEGEND

Bearings are astronomic, derived from the computed bearing of N. 83° 01' 02" E. between
L.S.C.M. 3-3846 (N. 5 026 755.597, E. 371 002.296) and L.S.C.M. 3-3715 (N. 5 026 785.741,
E. 371 248.415) and are referred to the Central Meridian of Zone 9 of the Ontario
Co-ordinate System, Longitude 76° 30' W.

(S.U.) denotes Source Unknown.

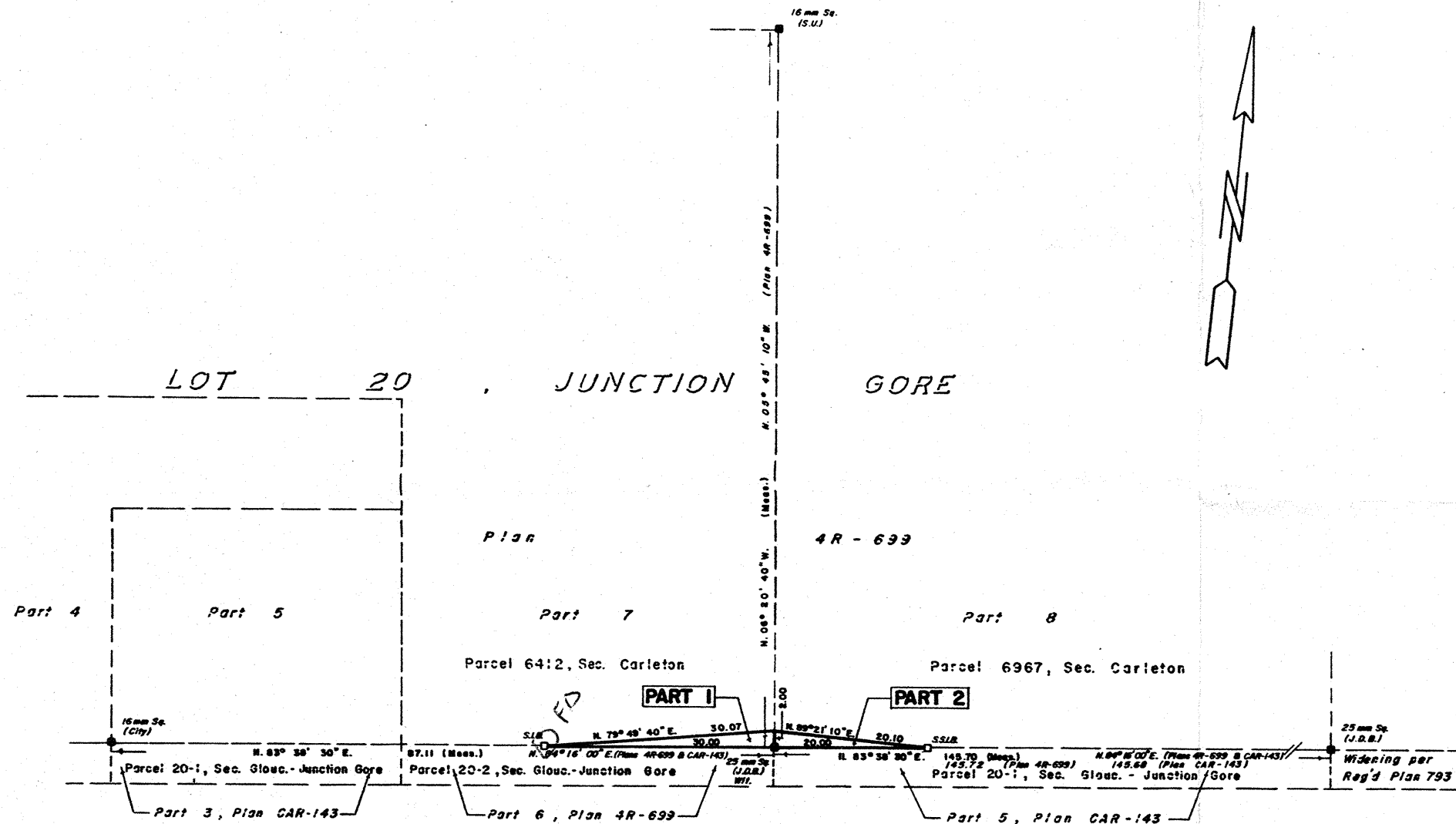
SURVEYOR'S CERTIFICATE

I certify that:

- This survey and plan are correct and in accordance with The Surveys Act and The Land Titles Act and the regulations made thereunder.
- The survey was completed on the 14th day of December, 1984.

December 12, 1984
Ottawa, Ontario

J. J. Brun
J. J. Brun
Ontario Land Surveyor



Heron Road
(Road Allowance between Lots 20 & 21, Junction Gore)

I REQUIRE THIS PLAN TO BE
DEPOSITED UNDER THE LAND
TITLES ACT.

21 DECEMBER 1984

P. Dewhirst
P. DEWHIRST, O.L.S.

On Behalf of The Regional
Municipality of Ottawa-Carleton

EXAMINER'S APPROVAL

Approved *J. J. Brun*
Asst. Examiner

Part 1 Part of Parcel 6412
Section Carleton
Part 2 Part of Parcel 6967
Section Carleton

METRIC

DISTANCES SHOWN ON THIS
PLAN ARE IN METRES AND
CAN BE CONVERTED TO FEET
BY DIVIDING BY 0.3048.

CAUTION

THIS PLAN IS NOT A PLAN OF
SUBDIVISION WITHIN THE MEANING
OF THE PLANNING ACT.

THE REGIONAL MUNICIPALITY OF
OTTAWA - CARLETON

SURVEY BRANCH

SURVEY BY : O. FOSTER / E. COOMBE
DRAWN BY : J. NUISE
CHECKED BY : J. J. BRUN
FILE NO : 592

DRAWING NO

8735

