

MARCH ROAD (REGIONAL ROAD NO. 49)

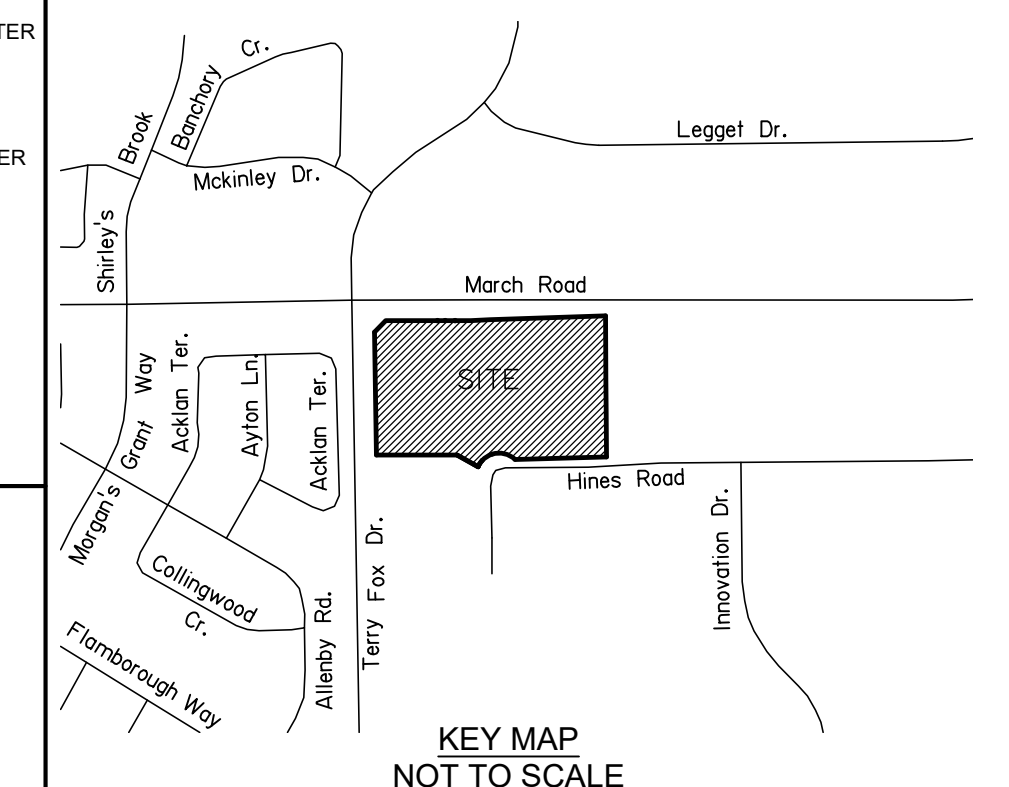
ROAD ALLOWANCE BETWEEN CONCESSIONS 3 AND 4

TRANSFERRED BY ORDER IN COUNCIL 2446/82 INST. N516650 (MTO PLAN P-1648-45)
P.I.N. 04517 - 0348

SUBJECT TO THE CONDITIONS, IF ANY, SET FORTH IN OUR LETTER DATED

THIS DRAFT PLAN IS APPROVED BY THE CITY OF OTTAWA UNDER SECTION 51 OF THE PLANNING ACT, THIS DAY OF 2023

LILY XU, MCIP RPP, MANAGER
DEVELOPMENT REVIEW-SOUTH
PLANNING, REAL ESTATE AND ECONOMIC
DEVELOPMENT DEPARTMENT, CITY OF OTTAWA



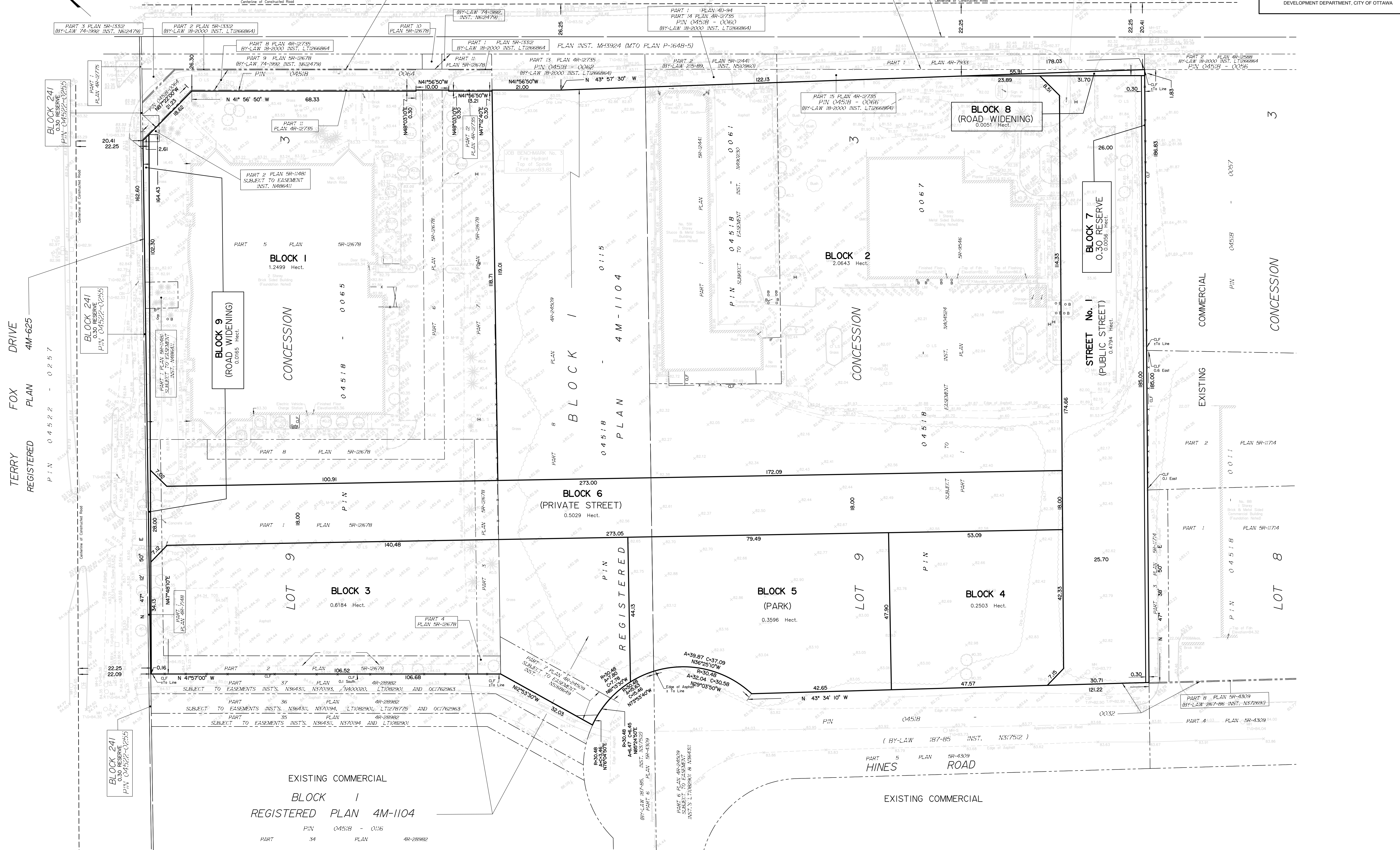
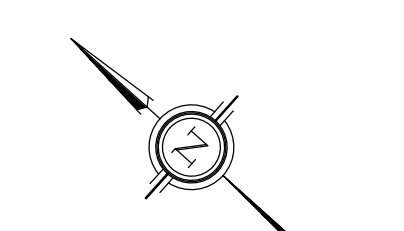
DRAFT PLAN OF SUBDIVISION OF BLOCK 1 REGISTERED PLAN 4M-1104 AND PART OF LOT 9 CONCESSION 3 Geographic Township of March CITY OF OTTAWA
Prepared by Annis, O'Sullivan, Vollebakk Ltd.

Scale 1 : 500
Metric
DISTANCES SHOWN ON THIS PLAN ARE IN METRES AND CAN BE CONVERTED TO FEET BY DIVIDING BY 0.3048

SURVEYOR'S CERTIFICATE
I CERTIFY THAT:
The boundaries of the lands to be subdivided and their relationship to adjoining lands have been accurately and correctly shown.
Date _____ E. H. Herweyer
ONTARIO LAND SURVEYOR

ADDITIONAL INFORMATION REQUIRED UNDER SECTION 51-17 OF THE PLANNING ACT
(a) see plan
(b) see plan
(c) see plan
(d) (purpose for which lots are to be used)
(e) see plan
(f) see plan
(g) see plan
(h) City of Ottawa
(i) see soils report
(j) see plan
(k) (municipal services available or to be available)
(l) see plan

REVISION SCHEDULE			
NO.	REVISION	DATE	BY
D5	Blocks 3 & 5 revised	Dec 8, 2023	lg
D4	revised	Nov 24, 2023	lg
D3	Block, sight triangle, reserve added, street changed to 18m	Nov 23, 2023	lg
D2			
D1	PLAN PREPARED	2023	lg



EXISTING COMMERCIAL
BLOCK 1
REGISTERED PLAN 4M-1104
P.I.N. 04518 - 0016
PART 34 PLAN 4R-28982

TERRY FOX DRIVE
REGISTERED PLAN 4M-625
P.I.N. 04522 - 0257

BLOCK 241
0.30 RESERVE
P.I.N. 04522-0255

BLOCK 9
(ROAD WIDENING)
0.065 Hect.

BLOCK 1
1.2499 Hect.

BLOCK 6
(PRIVATE STREET)
0.5029 Hect.

BLOCK 3
0.6184 Hect.

BLOCK 5
(PARK)
0.3596 Hect.

BLOCK 4
0.2503 Hect.

BLOCK 8
(ROAD WIDENING)
0.0051 Hect.

BLOCK 7
0.30 RESERVE
0.0056 Hect.

BLOCK 2
2.0643 Hect.

HINES ROAD

STREET No. 1
(PUBLIC STREET)
0.0794 Hect.

EXISTING

EXISTING

EXISTING

EXISTING

EXISTING

EXISTING