



**The  
Conservancy**

BARRHAVEN · OTTAWA

# CONSERVANCY EAST

LANDSCAPE DESIGN BRIEF | MARCH 2024

**CAIVAN**  
COMMUNITIES

**NAK** ■  
design strategies



TABLE OF CONTENTS

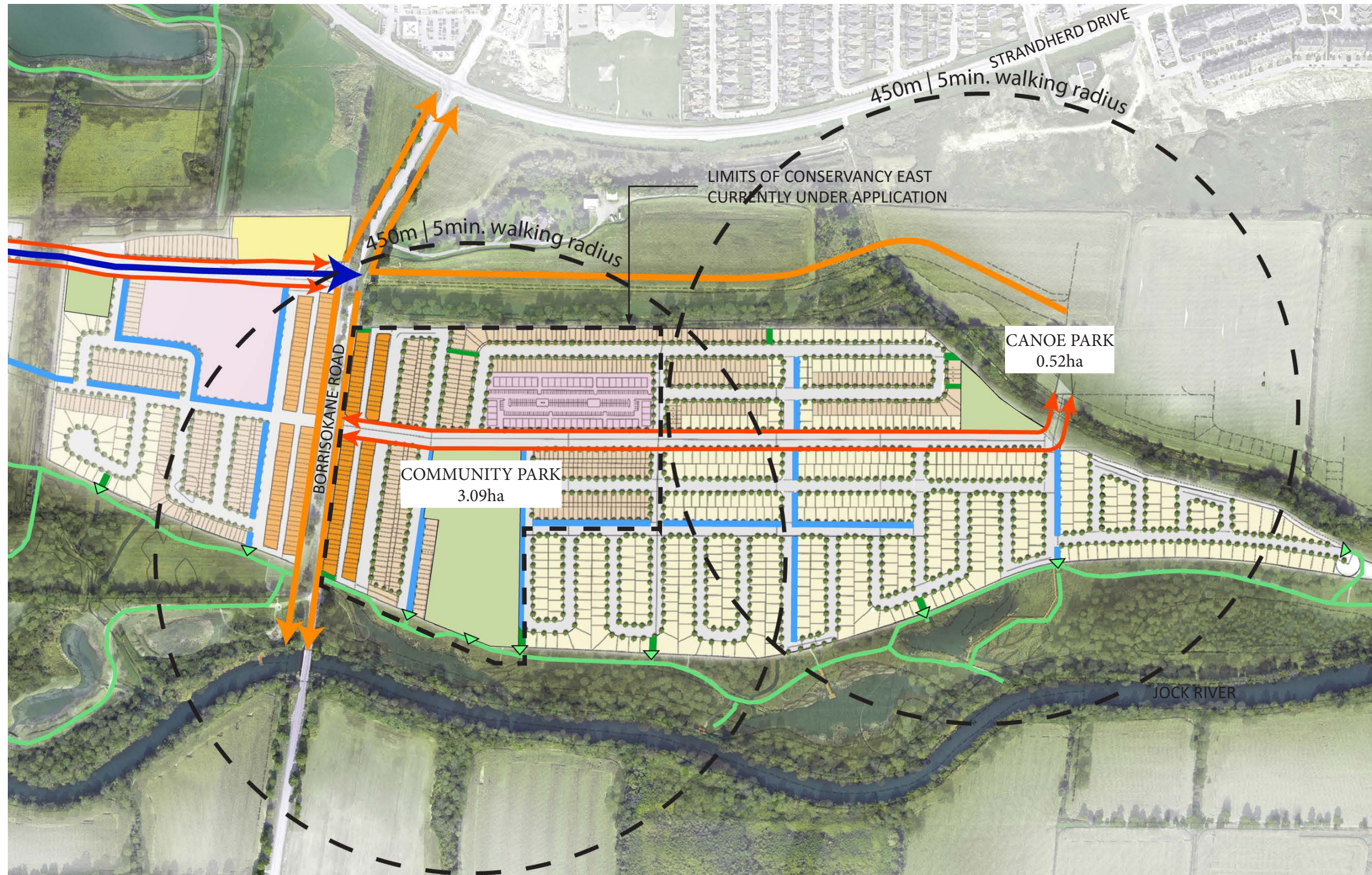
Community Master Plan.....3  
Active Mobility and Open Space .....4  
Community Park.....5  
Canoe Park .....6  
Soil Volume Calculations .....7



COMMUNITY MASTER PLAN



ACTIVE MOBILITY & OPEN SPACE



LEGEND

- BRT Alignment
- Cycle Track / Sidewalk
- Multi-Use Pathway
- Sidewalk
- Walkway Block
- Recreational Trails
- ▼ Trail Access Points
  
- 18.9 m Rear-Lane TH
- Stacked Condo
- 19.6' Standard Townhouse

NOTE:

Conservancy Lands west of Borriskane Road shown for active transportation and connectivity context only.

Disclaimer:

Canoe Park is not within the Limits of Conservancy East currently under application, it is shown for connectivity context only.

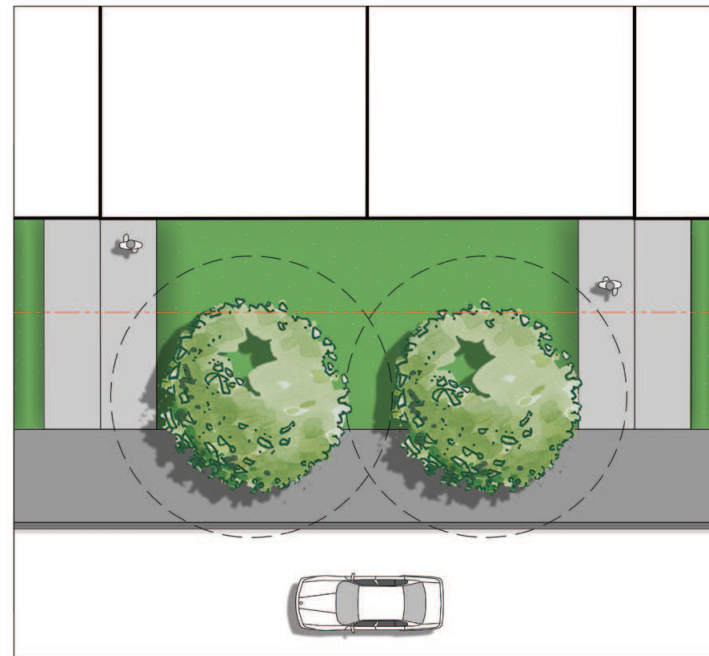
COMMUNITY PARK 3.09ha



CANOE PARK 0.52ha



SOIL VOLUME CALCULATION



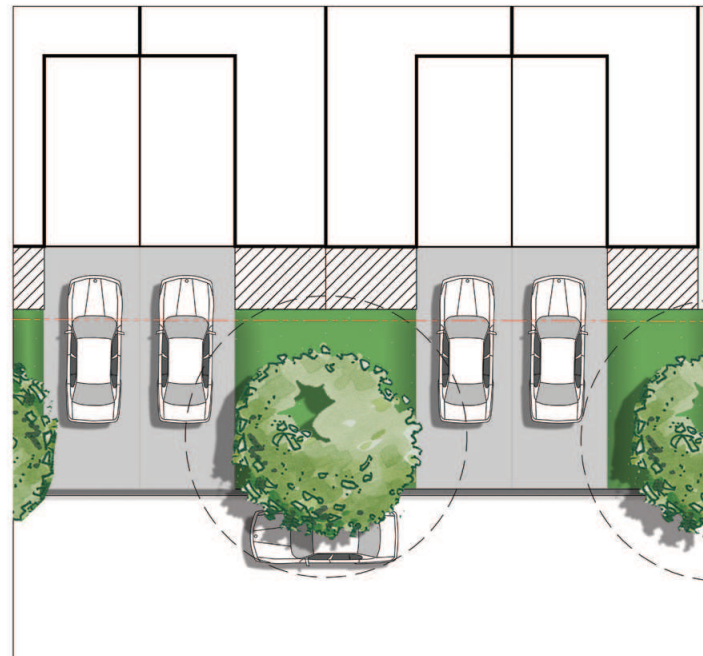
STACKED

Stacked Soil Volume:

- Length: 13.2m
- Width: 6.7m
- Depth: 1.5m

Less utility trenches (42m<sup>3</sup>)

**Soil Volume = 91.2m<sup>3</sup>**



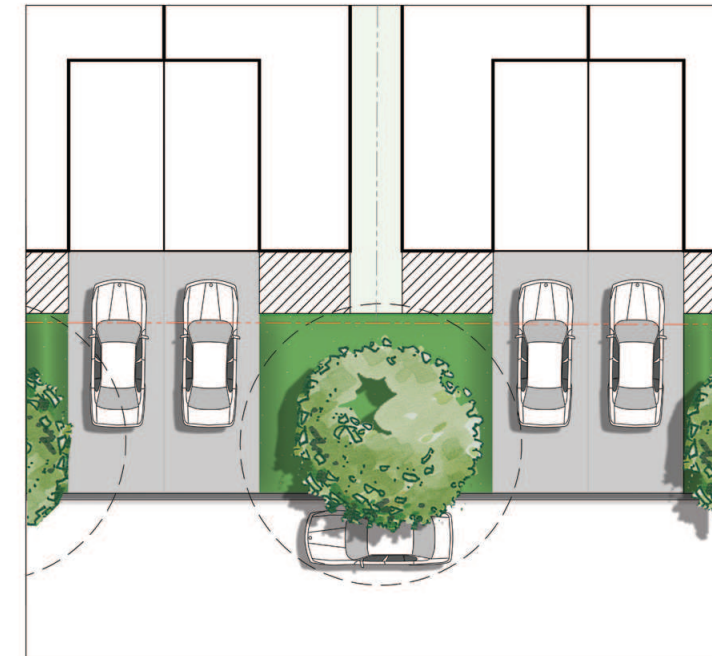
STANDARD TOWNHOUSE  
CONDITION 1

Detached Soil Volume:

- Length: 5.8m
- Width: 6.0m
- Depth: 1.5m

Less utility trenches (9m<sup>3</sup>)

**Soil Volume = 42.45m<sup>3</sup>**



STANDARD TOWNHOUSE  
CONDITION 2

Detached Soil Volume:

- Length: 5.8m
- Width: 7.6m
- Depth: 1.5m

Less utility trenches (11.4m<sup>3</sup>)

**Soil Volume = 53.5m<sup>3</sup>**

\* 4.5m setback from tree to foundation must be provided for small to medium sized trees.

\* Small trees must be provided with 25m<sup>3</sup> soil volume.

\* Medium trees must be provided with 30m<sup>3</sup> soil volume.