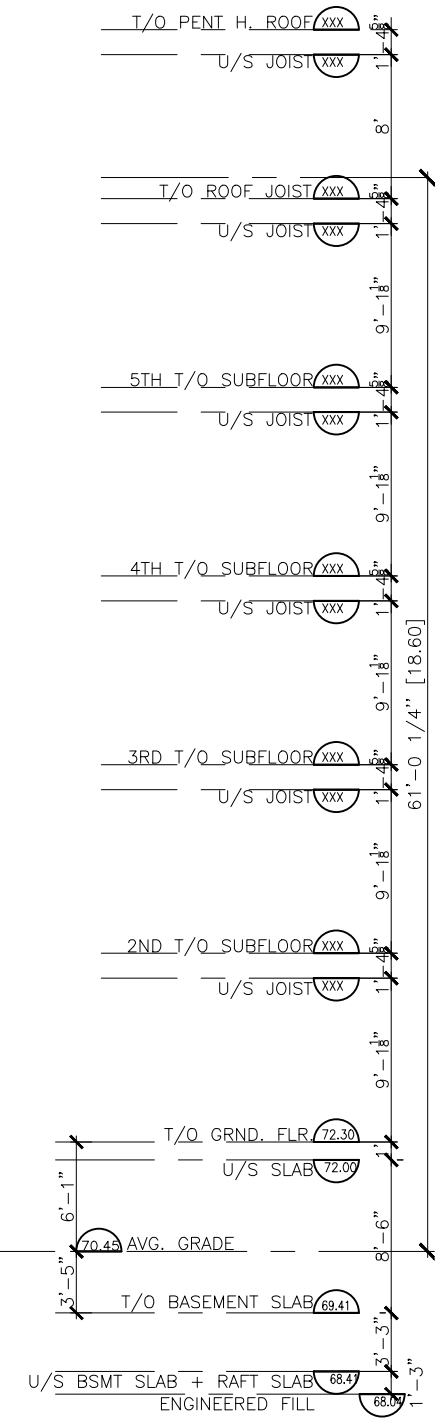


P:\2017\01917_283+285_MCLEOD\2.0_ARCH\2.3_DRAWINGS\2.3.1_DD\2.3.1.5_SECTIONS\220608_283+285_MCLEOD_SECTIONS.dwg - LAYOUT A14 FRONT_ELEV - PLOT DATE 25-JUL-23 - LAST SAVED BY DM - LAST SAVED DATE July 25, 2023



MATERIAL LEGEND

- (CB) FIBER CEMENT BOARD
- (SW) SYNTHETIC WOOD RIBBED SIDING AS PER MANUFACTURER. NEW TECHWOOD CANADA.
- (AP) ALUMINUM PANEL
- (BV) BRICK VENEER
- (N1) RAILING & GUARD GUARD RAILS ARE PAINTED STEEL OR ALUMINUM(BLACK).
- (N2) PANELS ARE ACTUALLY SCREENS OF SYNTHETIC WOOD "SLATS" (BLACK).
- (N3) DECKING + SOFFITS ARE SYNTHETIC WOOD.

COLIZZA BRUNI
architecture

76 CHAMBERLAIN AVE • OTTAWA • ONTARIO • K1S 1V9
T 613.236.2944 • F 613.236.6777 • www.colizzabruni.com

PROJECT NAME
283 + 285 MCLEOD ST
OTTAWA, ON

OTTAWA, ON



DRAWING TITLE
FRONT
ELEVATION

SCALE
AS NOTED
DRAWN BY
DAVID MURCIA
DATE
7/25/23
PROJECT NO.
01917

DRAWING NO.

A14

1
A14 FRONT ELEVATION
3/32" = 1'-0"

P:\2017\01917_283+285 MCLEOD\2.0 ARCH\2.3 DRAWINGS\2.3.1 DD\2.3.1.5 SECTIONS\220608_283+285 MCLEOD_SECTIONS.dwg - LAYOUT A15 BACK-ELEV - PLOT DATE 8-May-23 - LAST SAVED BY DM - LAST SAVED DATE May 8, 2023



MATERIAL LEGEND

- (CB) FIBER CEMENT BOARD
- (SW) SYNTHETIC WOOD RIBBED SIDING AS PER MANUFACTURER. NEW TECHWOOD CANADA.
- (AP) ALUMINUM PANEL
- (BV) BRICK VENEER
- (N1) RAILING & GUARD GUARD RAILS ARE PAINTED STEEL OR ALUMINUM(BLACK).
- (N2) PANELS ARE ACTUALLY SCREENS OF SYNTHETIC WOOD "SLATS" (BLACK).
- (N3) DECKING + SOFFITS ARE SYNTHETIC WOOD.

COLIZZA BRUNI
architecture

76 CHAMBERLAIN AVE • OTTAWA • ONTARIO • K1S 1V9
T 613.236.2944 • F 613.236.6777 • www.colizzabruni.com

PROJECT NAME
283 + 285 MCLEOD ST
OTTAWA, ON



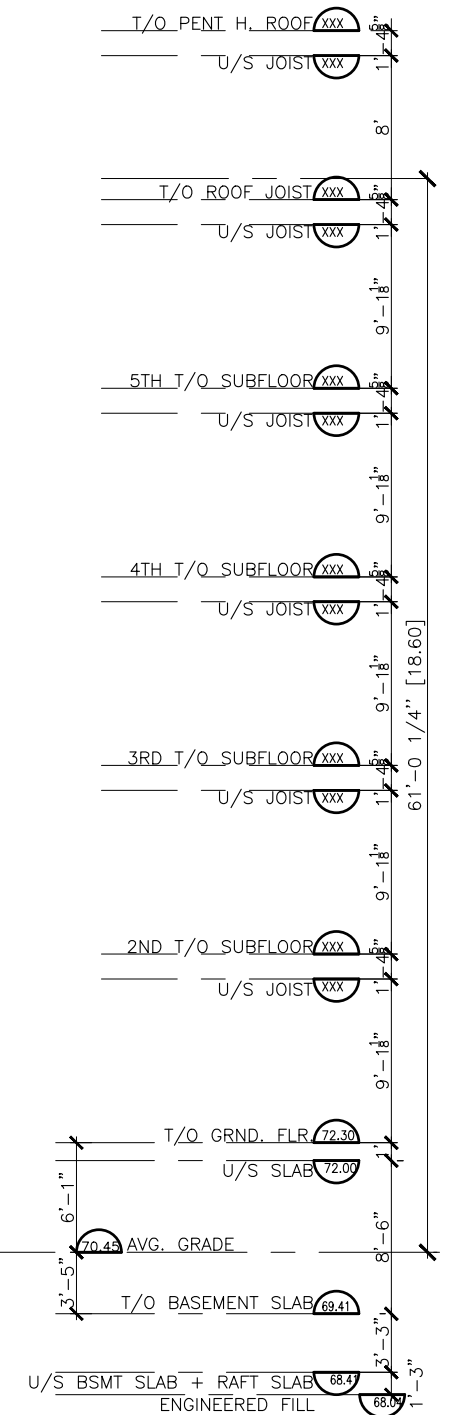
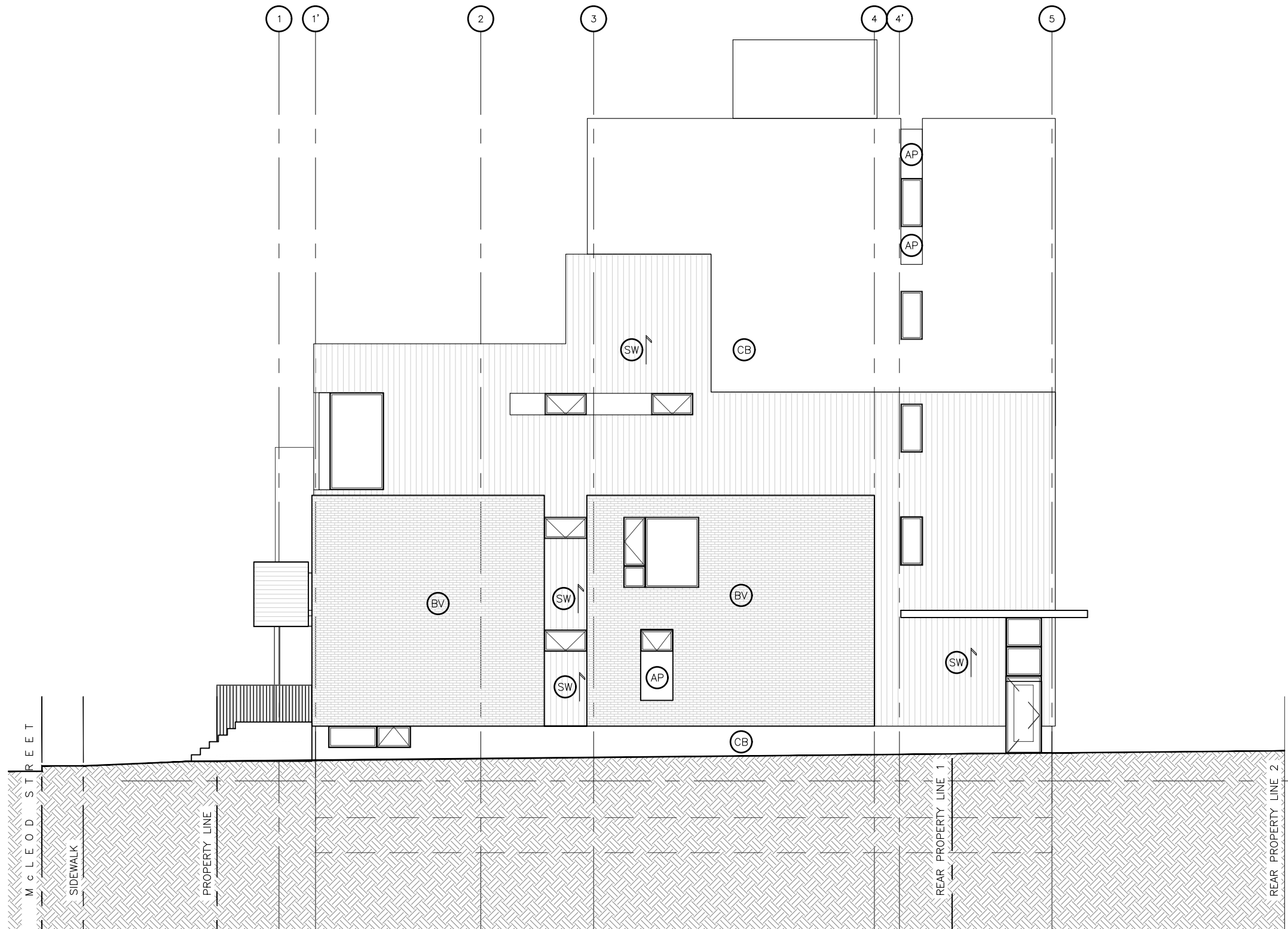
DRAWING TITLE
BACK
ELEVATION

SCALE
AS NOTED
DRAWN BY
DAVID MURCIA
DATE
5/8/23
PROJECT NO.
01917

DRAWING NO.
A15

1
A15 BACK ELEVATION
3/32" = 1'-0"

P:\2017\01917_283+285 MCLEOD\2.0 ARCH\2.3 DRAWINGS\2.3.1 DD\2.3.1.5 SECTIONS\220608_283+285 MCLEOD_SECTIONS.dwg - LAYOUT A17 NORTH-EAST_ELEV - PLOT DATE 8-May-23 - LAST SAVED BY DM - LAST SAVED DATE May 8, 2023



MATERIAL LEGEND

- (CB) FIBER CEMENT BOARD
- (SW) SYNTHETIC WOOD RIBBED SIDING AS PER MANUFACTURER. NEW TECHWOOD CANADA.
- (AP) ALUMINUM PANEL
- (BV) BRICK VENEER
- (N1) RAILING & GUARD GUARD RAILS ARE PAINTED STEEL OR ALUMINUM(BLACK).
- (N2) PANELS ARE ACTUALLY SCREENS OF SYNTHETIC WOOD "SLATS" (BLACK).
- (N3) DECKING + SOFFITS ARE SYNTHETIC WOOD.

COLIZZA BRUNI
architecture

76 CHAMBERLAIN AVE • OTTAWA • ONTARIO • K1S 1V9
T 613.236.2944 • F 613.236.6777 • www.colizzabruni.com

PROJECT NAME
283 + 285 MCLEOD ST
OTTAWA, ON

OTTAWA, ON



DRAWING TITLE
NORTH-EAST
ELEVATION

SCALE
AS NOTED
DRAWN BY
DAVID MURCIA
DATE
5/8/23
PROJECT NO.
01917

DRAWING NO.
A17

1
A17 NORTH-EAST ELEVATION
3/32" = 1'-0"