

**EAST ELEVATION**  
1 : 200  
5m 20m



**NORTH ELEVATION**  
1 : 200  
5m 20m

**EXTERIOR MATERIALS LEGEND**

**MASONRY**

1.1 MASONRY  
FINISH : OFF-WHITE (COLOR CODE TBC)

1.2 EXISTING MASONRY

1.3 MASONRY  
FINISH : OFF-WHITE (COLOR CODE TBC)

**METAL CLADDING**

2.1 PRE-PAINTED ALUMINIUM PANELS  
FINISH : OFF-WHITE (COLOR CODE TBC)

2.2 PRE-PAINTED ALUMINIUM PANEL  
FINISH : CHARCOAL (COLOR CODE TBC)

2.3 PRE-PAINTED METAL FLASHING  
FINISH : OFF-WHITE (COLOR CODE TBC)

2.4 PRE-PAINTED STEEL PANEL  
FINISH : OFF-WHITE (COLOR CODE TBC)

**WINDOWS, DOORS AND CURTAIN WALLS**

4.1 WINDOWS, CURTAIN WALLS AND DOORS : PRE-PAINTED ALUMINIUM & CLEAR TEMPERED GLASS  
FINISH : OFF-WHITE (COLOR CODE TBC)

4.2 WINDOWS, CURTAIN WALLS AND DOORS : PRE-PAINTED ALUMINIUM & CLEAR TEMPERED GLASS  
FINISH : CHARCOAL (COLOR CODE TBC)

4.3 DOOR : PAINTED STEEL  
FINISH : OFF-WHITE (COLOR CODE TBC)

**RAILINGS AND SCREENS**

5.1 ANODIZED ALUMINIUM FRAME & NATURAL CLEAR GLASS  
FINISH : OFF-WHITE (COLOR CODE TBC)

5.2 ANODIZED ALUMINIUM FRAME & PATTERNED GLASS  
FINISH : OFF-WHITE (COLOR CODE TBC)

**NOTES GÉNÉRALES - General Notes**

1. Ces documents d'architecture sont la propriété exclusive de NEUF architect(e)s et ne peuvent être utilisés, reproduits ou copiés sans autorisation écrite préalable. / These architectural documents are the exclusive property of NEUF architect(e)s and cannot be used, copied or reproduced without written pre-authorization.

2. Les dimensions apparaissant aux documents doivent être vérifiées par l'entrepreneur avant le début des travaux. / All dimensions which appear on the documents must be verified by the contractor before to start the work.

3. Veuillez aviser l'architecte de toute dimension erreur et/ou divergences entre ces documents et ceux des autres professionnels. / The architect must be notified of all errors, omissions and discrepancies between these documents and those of the others professionals.

4. Les dimensions sur ces documents doivent être lues et non mesurées. / The dimensions on these documents must be read and not measured.

**STRUCTURE - Structure**  
**D+M Structural inc.**  
333 Preston St. Suite 110, Ottawa, ON K1S 5H4  
T 613 651 9490

**LANDSCAPE ARCHITECT - Architecture de Paysage**  
**Fotenn Planning + Design**  
396 Cooper St Suite 300, Ottawa, ON K2P 2H7  
T 613 735 5709

**CIVIL - Civil**  
**EXP**  
2650 Queenview Dr Suite 100  
T 613 588 1659

**MECHANICAL/ELECTRICAL - Mécanique/Électrique**  
**Jain Sustainability Consultants**  
7455 Carleton Place, Carleton Place, Ontario, Canada  
T 905 285 9900

**URBAN PLANNER - Urbaniste**  
**Fotenn Planning + Design**  
396 Cooper St Suite 300, Ottawa, ON K2P 2H7  
T 613 735 5709

**ARCHITECT - Architectes**  
**NEUF architect(e)s**  
630, Blvd. René-Lévesque O. 2<sup>e</sup> étage, Montréal QC H2B 1S6  
T 514 947 1117 NEUFarchitectes.com

**SCEAU / Seal**



**CLIENT - Client**  
**SMART LIVING PROPERTIES**  
226 Angèle Avenue, Ottawa, Ontario K2P 1B9

**OUVRAGE - Project**  
**211-231 BANK**

**EMPLACEMENT - Location** NO PROJET No. 13369  
211-231 BANK STREET, OTTAWA

NO	RÉVISION	DATE (aaaa mm jj)
1	SPC	2024.09.26

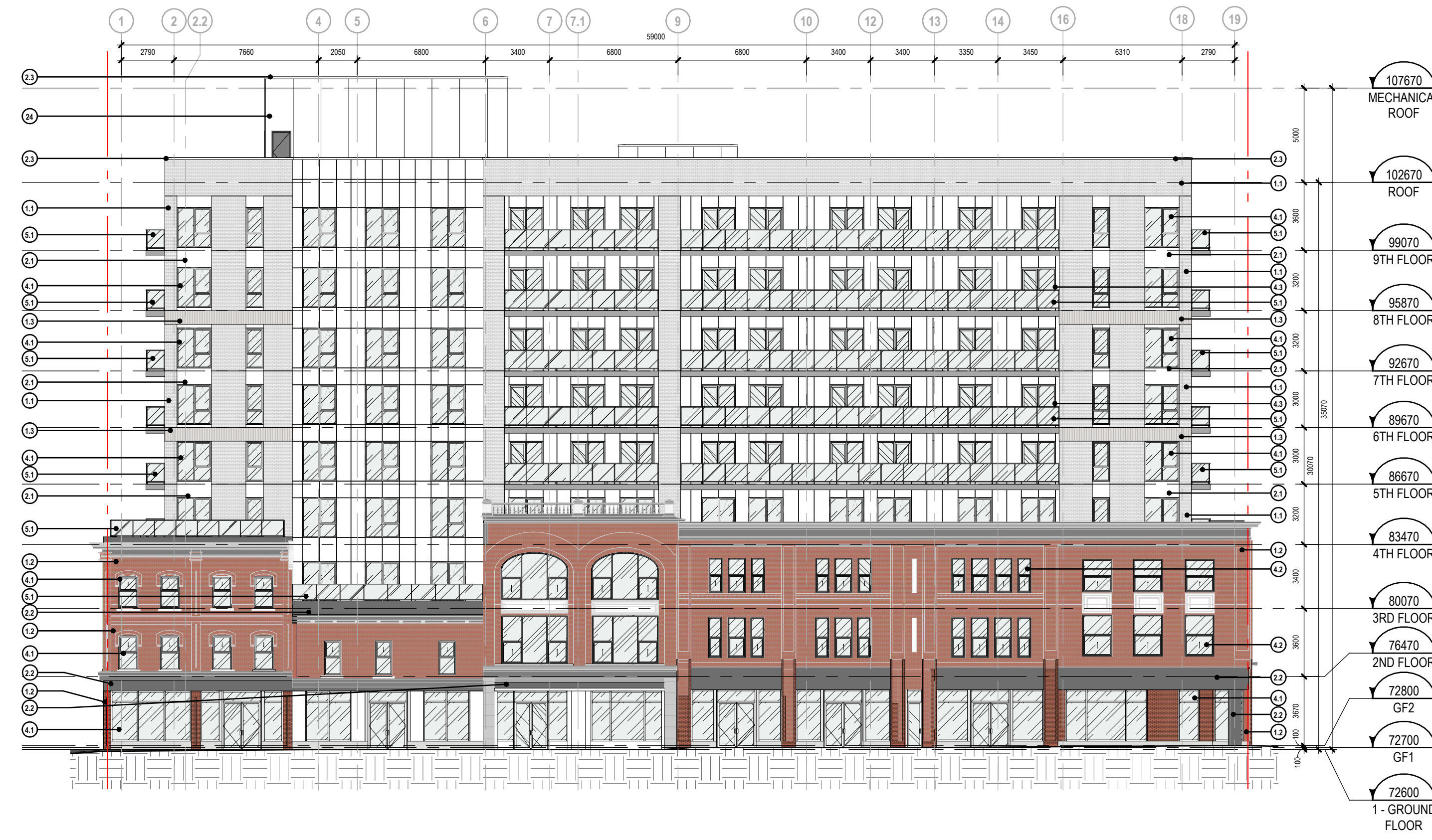
**DESSINÉ PAR - Drawn by** S.W. **VÉRIFIÉ PAR - Checked by** M.M., H.G.  
**DATE (aaaa mm jj)** 2024.09.26 **ÉCHELLE - Scale** As  
**TITRE DU DESSIN - Drawing Title** indicated

**NORTH & EAST ELEVATIONS**

**REVISION - Revision** NO. DESSIN - Dwg Number  
**1** **SPC-07**

**FILE NUMBERS:** D02-02-22-0127  
D07-12-22-0188  
**PLAN NUMBER:** 18910

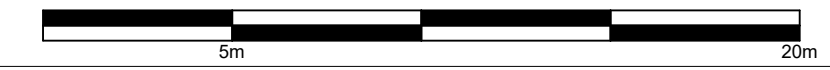




WEST ELEVATION

1:200

2  
SPC-06



SOUTH ELEVATION

1:200

1  
SPC-06



**EXTERIOR MATERIALS LEGEND**

**MASONRY**

(1.1) MASONRY  
FINISH : OFF-WHITE (COLOR CODE TBC)

(1.2) EXISTING MASONRY

(1.3) MASONRY  
FINISH : OFF-WHITE (COLOR CODE TBC)

**METAL CLADDING**

(2.1) PRE-PAINTED ALUMINIUM PANELS  
FINISH : OFF-WHITE (COLOR CODE TBC)

(2.2) PRE-PAINTED ALUMINIUM PANEL  
FINISH : CHARCOAL (COLOR CODE TBC)

(2.3) PRE-PAINTED METAL FLASHING  
FINISH : OFF-WHITE (COLOR CODE TBC)

(2.4) PRE-PAINTED STEEL PANEL  
FINISH : OFF-WHITE (COLOR CODE TBC)

**WINDOWS, DOORS AND CURTAIN WALLS**

(4.1) WINDOWS, CURTAIN WALLS AND DOORS : PRE-PAINTED ALUMINIUM & CLEAR TEMPERED GLASS  
FINISH : OFF-WHITE (COLOR CODE TBC)

(4.2) WINDOWS, CURTAIN WALLS AND DOORS : PRE-PAINTED ALUMINIUM & CLEAR TEMPERED GLASS  
FINISH : CHARCOAL (COLOR CODE TBC)

(4.3) DOOR : PAINTED STEEL  
FINISH : OFF-WHITE (COLOR CODE TBC)

**RAILINGS AND SCREENS**

(5.1) ANODIZED ALUMINIUM FRAME & NATURAL CLEAR GLASS  
FINISH : OFF-WHITE (COLOR CODE TBC)

(5.2) ANODIZED ALUMINIUM FRAME & PATTERNED GLASS  
FINISH : OFF-WHITE (COLOR CODE TBC)

NOTES GÉNÉRALES - General Notes

1. Ces documents d'architecture sont la propriété exclusive de NEUF architect(e)s et ne peuvent être utilisés, reproduits ou copiés sans autorisation écrite préalable. / These architectural documents are the exclusive property of NEUF architect(e)s and cannot be used, copied or reproduced without written pre-authorization.

2. Les dimensions apparaissant aux documents doivent être vérifiées par l'entrepreneur avant le début des travaux. / All dimensions which appear on the documents must be verified by the contractor before to start the work.

3. Veuillez aviser l'architecte de toute divergence entre ces documents et ceux des autres professionnels. / The architect must be notified of all errors, omissions and discrepancies between these documents and those of the others professionals.

4. Les dimensions sur ces documents doivent être lues et non mesurées. / The dimensions on these documents must be read and not measured.

STRUCTURE: Structure  
**D+M Structural inc.**  
 333 Preston St. Suite 110, Ottawa, ON K1S 5M4  
 T 613 651 9490

LANDSCAPE ARCHITECT: Architecture de Paysage  
**Fotenn Planning + Design**  
 396 Cooper St. Suite 300, Ottawa, ON K2P 2H7  
 T 613 730 5709

CIVIL: Civil  
**EXP**  
 2650 Queenview Dr Suite 100  
 T 613 688 1659

MECHANICAL/ELECTRICAL: Mécanique/Électrique  
**Jain Sustainability Consultants**  
 7455 Carleton Place, Carleton Place, Ontario, L3Y 9P9  
 T 905 265 9900

URBAN PLANNER: Urbaniste  
**Fotenn Planning + Design**  
 396 Cooper St. Suite 300, Ottawa, ON K2P 2H7  
 T 613 730 5709

ARCHITECT: Architectes  
**NEUF architect(e)s**  
 630, boul. René-Lévesque O. Carrefour, Montréal QC H2B 1S6  
 T 514 947 1117 NEUFarchitectes.com

SCEAU / Seal

**NEUF**  
 ARCHITECT(E)S



CLIENT: Client

**SMART LIVING PROPERTIES**  
 226 Artyle Avenue, Ottawa, Ontario K2P 1B9

OUVRAGE: Project  
**211-231 BANK**

EMPLACEMENT: Location NO PROJET: No.  
 211-231 BANK STREET, 13369  
 OTTAWA

NO	REVISION	DATE (aaaa mm jj)
1	SPC	2024.09.26

DESSINÉ PAR: Drawn by S.W. VERIFIÉ PAR: Checked by M.M., H.G.  
 DATE: (aaaa mm jj) 2024.09.26 ÉCHELLE: Scale As  
 TITRE DU DESSIN: Drawing Title indicated

**SOUTH & WEST ELEVATIONS**

REVISION: Revision NO. DESSIN: Dwg Number

**1** **SPC-06**

FILE NUMBERS: D02-02-22-0127  
 D07-12-22-0188

PLAN NUMBER: 18910