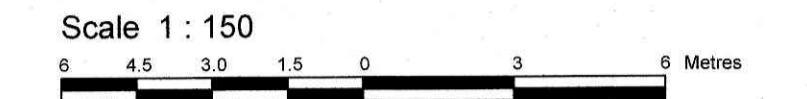


LOTS 8 AND D
PART OF LOT E
AND
PART OF DEVONSHIRE ROAD
(Closed by Judge's Order Inst. LT30380)
REGISTERED PLAN 4M-61
CITY OF OTTAWA

Surveyed by Annis, O'Sullivan, Vollebek Ltd.



Metric
DISTANCES SHOWN ON THIS PLAN ARE IN METRES AND CAN BE CONVERTED TO FEET BY DIVIDING BY 0.3048

Surveyor's Certificate
I CERTIFY THAT:
1. This survey and plan are correct and in accordance with the Surveys Act, the Surveyors Act and the Land Titles Act and the regulations made under them.
2. The survey was completed on the 18th day of December, 2018.

January 7, 2019
Date
Andrew J. Brotham
Ontario Land Surveyor

PART 2
THIS PLAN MUST BE READ IN CONJUNCTION WITH SURVEY REPORT DATED: January 7, 2019

ANNIS, O'SULLIVAN, VOLLEBEK LTD. grants to Boris Rogalski (The Client), their solicitors, mortgages, and other related parties, permission to use original, signed, sealed copies of the Surveyor's Real Property Report in transactions involving The Client.

Notes & Legend

- | | | |
|--------|---------|----------------------------------|
| —□— | Denotes | Survey Monument Planted |
| —■— | | Survey Monument Found |
| SIB | | Standard Iron Bar |
| SSIB | | Short Standard Iron Bar |
| IB | | Iron Bar |
| (WIT) | | Witness |
| Meas. | | Measured |
| (AOG) | | Annis, O'Sullivan, Vollebek Ltd. |
| (PI) | | Registered Plan 4M-61 |
| (P2) | | (AOG) Plan May 28, 2004 |
| (P3) | | (1287) Plan May 28, 2001 |
| (P4) | | (1287) Plan August 23, 2000 |
| (P5) | | (1287) Plan May 11, 1991 |
| (P6) | | (1236) Plan April 27, 1999 |
| (P7) | | Plan 4R-3858 |
| ○ | | Deciduous Tree |
| ★ | | Coniferous Tree |
| ○ | | Fire Hydrant |
| ○ M+ST | | Maintenance Hole (Storm Sewer) |
| ○ M+S | | Maintenance Hole (Sanitary) |
| ○ M+H | | Maintenance Hole |
| □ | | Catch Basin |
| ○ W | | Water Valve |
| CLF | | Chain Link Fence |
| BF | | Board Fence |
| RWT | | Retaining Wall Timber |
| RWC | | Retaining Wall Concrete |
| Acc. | | Accepted |
| φ | | Diameter |
| ○ LP | | Utility Pole |
| ○ AN | | Guy Wire Anchor |
| +65.00 | | Location of Elevations |
| +66.00 | | Top of Retaining Wall Elevation |
| — | | Centreline |
| — ST — | | Underground Storm Sewer |
| — S — | | Underground Sanitary Sewer |
| — W — | | Underground Water Sewer |
| — C — | | Underground Combined Sewer |
| — G — | | Underground Gas |
| — OW — | | Overhead Wires |
| — | | Property Line |



Topographic data was collected under Winter Conditions. Snow cover and ice preclude determining location and elevation of some topographical data that is otherwise visible.

For comparisons purposes a rotation of 9°00' counterclockwise was applied to Plans (P) to (P7).

Bearings are grid and are referred to the Central Meridian of MTM Zone 9 (78°30' West Longitude) NAD-83 (original).

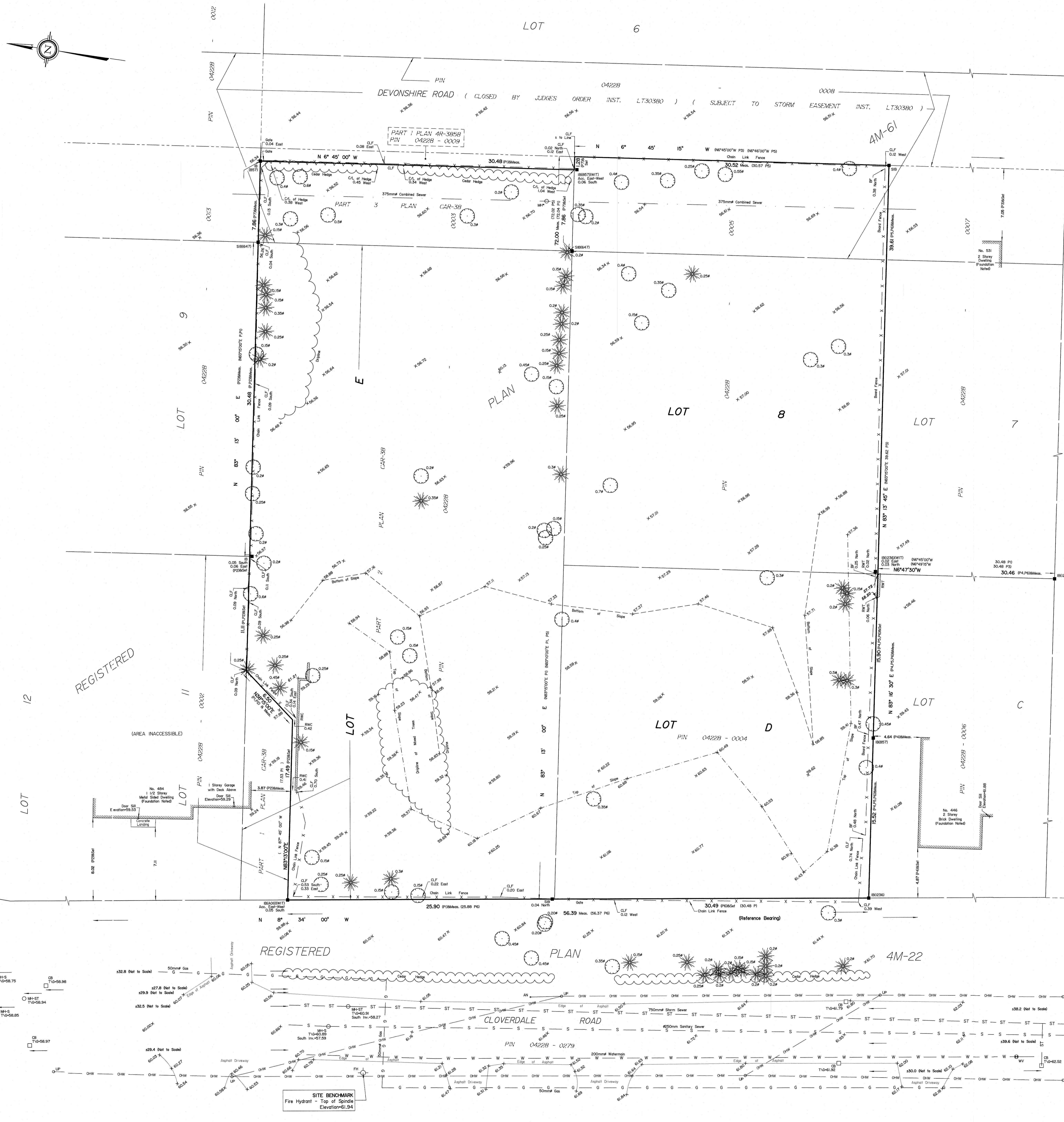
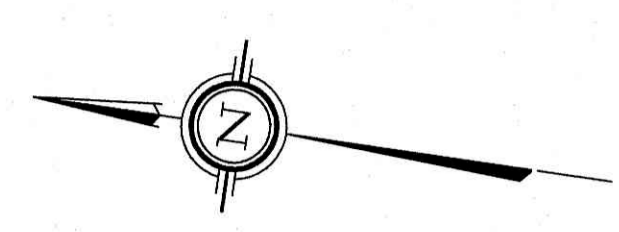
ELEVATION NOTES

- Elevations shown are geodetic and are referred to the CGVD28 geodetic datum.
- It is the responsibility of the user of this information to verify that the job benchmark has not been altered or disturbed and that its relative elevation and description agrees with the information shown on this drawing.

UTILITY NOTES

- This drawing cannot be accepted as acknowledging all of the utilities and it will be the responsibility of the user to contact the respective utility authorities for confirmation.
- Only visible surface utilities were located.
- A field location of underground plan by the pertinent utility authority is mandatory before any work involving breaking ground, probing, excavating etc.
- Underground utility services and inverts are taken from City of Ottawa Engineering Drawings A-16-39 and 11623 (sheet 14 of 42).
- Location of MH marked with an * taken from City of Ottawa Engineering Drawing A-16-39.

© Annis, O'Sullivan, Vollebek Ltd. 2019. THIS PLAN IS PROTECTED BY COPYRIGHT.
ANNIS, O'SULLIVAN, VOLLEBEK LTD.
14 Concourse Gate, Suite 500
Nepean, Ont. K2E 7S6
Phone: (613) 727-0850 / Fax: (613) 727-1079
Email: annis@annis.com
Reg. No. 8872-B, BOND PT. Ontario P.L. 4M-61 F.



SITE BENCHMARK
Fire Hydrant - Top of Saddle
Elevation=61.94

2019/07/25 10:45:15 AM 10/20/2019 10:45:15 AM