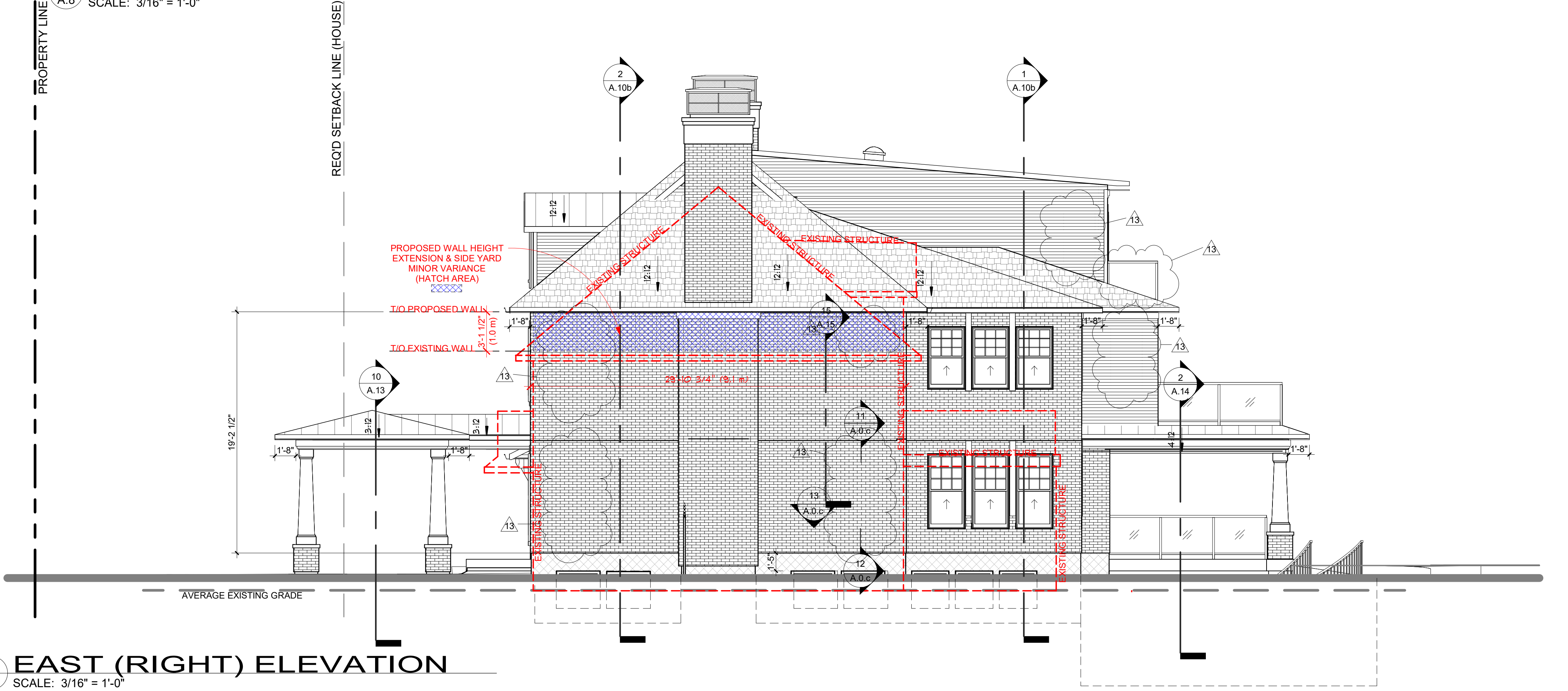




CONTRACTOR TO PROVIDE FINAL MATERIALS TO HERITAGE STAFF FOR REVIEW

EXTERIOR MATERIALS		
NUMBER	MATERIAL	COMMENTS
1	BRICK VENEER	RED COLOUR
2	JAMES HARDIE LAP SIDING	LIGHT GREY COLOUR
3	ASPHALT SHINGLES	BLACK COLOUR
4	METAL ROOF CLADDING	BLACK COLOUR
5	CONCRETE PAVING	GREY COLOUR
6	CONCRETE PORCH FLOOR	SMOOTH POLISHED FINISH
7	WINDOWS	ALUMINUM CLAD WOOD
8	WINDOW SHUTTERS	SUPPLIED BY:
9	PORCH COLUMNS	STEEL COLUMN WITH PRE FINISHED METAL FLASHING

1 SOUTH (FRONT) ELEVATION
SCALE: 3/16" = 1'-0"



2 EAST (RIGHT) ELEVATION
SCALE: 3/16" = 1'-0"

NOTES:
REFER TO GENERAL NOTES FOR ALL TYPICAL CONSTRUCTION NOTES & DETAILS. WHEN DRAWINGS OR NOTES REFERENCE O.B.C. IN ALL CASES PLEASE REFER TO THE LATEST VERSION OF THE ONTARIO BUILDING CODE 2012.

- LEGEND:
- (1) EXTERIOR DOOR & WINDOW TAG (SEE SCHEDULE ON A.0.a)
 - (2) DOOR TAG (SEE SCHEDULE ON A.0.a)
 - (W1) EXTERIOR WALL TYPE (SEE A.0.a)
 - (P1) INTERIOR PARTITION WALL TYPE (SEE A.0.a)
 - (F1) FLOOR TYPE (SEE A.0.a)
 - (R1) ROOF TYPE (SEE A.0.a)
 - (P1) POST TYPE (SEE A.0.a)
 - (F1) PAD FOOTING TYPE (SEE A.0.a)
 - (WF1) WALL FOOTING TYPE (SEE A.0.a)

- LEGEND CONT:
- (SDD) SMOKE/CARBON DETECTOR TO O.B.C. 9.10.19

BELL
+ ASSOCIATES
ARCHITECTURE

4184 John Street
Port Huron, ON N5A 1H7
519-279-6989

101-3108 Carp Road
London, ON N6A 1E2
513-831-9688

info@bell.ca
bellarchitecture.ca

VERSION NO. **14**
11/23/23

SEAL:

NOTES:
ALL CONTRACTORS MUST COMPLY WITH ALL CODES & REGULATIONS. IT IS THE RESPONSIBILITY OF THE APPROVED CONTRACTOR TO CHECK & VERIFY ALL DIMENSIONS ON THE DRAWING & REPORT ANY DISCREPANCIES TO THE DESIGNER PRIOR TO COMMENCEMENT.
DO NOT SCALE DRAWINGS.
DRAWINGS MAY BE USED FOR CONSTRUCTION UNLESS NOTED AS SUCH FOR CONSTRUCTION CONTRACT PURPOSES. THIS DRAWING IS A WORKING DOCUMENT AND NOT A CONTRACT DOCUMENT. ANY CHANGES TO THE DRAWING SHALL NOT BE USED FOR CONSTRUCTION WITHOUT THE WRITTEN APPROVAL OF THE DESIGNER.
CONTRACTOR NOTICE - CONTRACTOR IS RESPONSIBLE FOR VERIFYING ALL DIMENSIONS, MATERIALS, AND CONDITIONS ON THE JOB SITE PRIOR TO COMMENCEMENT OF WORK. THE USER SHALL VERIFY ALL DIMENSIONS & CONDITIONS ON THE JOB SITE PRIOR TO COMMENCEMENT OF WORK. THE USER SHALL BE RESPONSIBLE FOR ANY DISCREPANCIES OR OMISSIONS. THE USER SHALL BE RESPONSIBLE FOR OBTAINING ALL NECESSARY PERMITS AND APPROVALS PRIOR TO COMMENCEMENT OF WORK. THE USER SHALL BE RESPONSIBLE FOR OBTAINING ALL NECESSARY PERMITS AND APPROVALS PRIOR TO COMMENCEMENT OF WORK. THE USER SHALL BE RESPONSIBLE FOR OBTAINING ALL NECESSARY PERMITS AND APPROVALS PRIOR TO COMMENCEMENT OF WORK.

REVISIONS		
NO.	ITEM	DATE
11	ISSUED FOR B.P.	02/17/22
12	COORDINATION	02/21/22
13	CONSTRUCTION SET	05/8/22
14	ISSUED FOR CON. DWG.	11/23/23

PROJECT: **UGANDA HIGH COMMISSION**

CLIENT: **STITTVILLE, ONTARIO**

DRAWING: **FRONT & RIGHT ELEVATIONS**

SCALE: 3/16" = 1'-0"

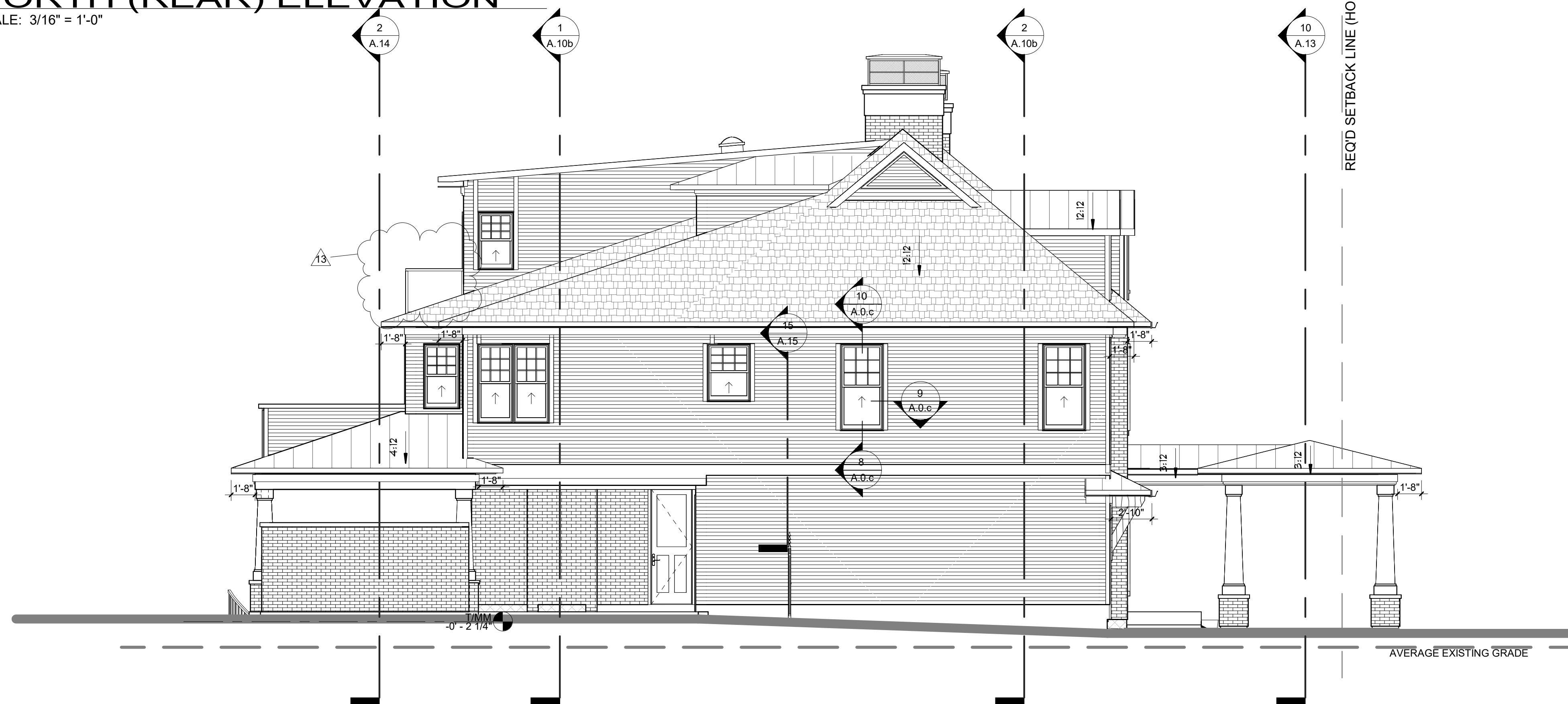
DRAWN BY: CB
DATE: AUG. 8, 2022
CHECKED BY: JB
APPROVED BY: JB
PROJECT NO.: 219-35
SHEET NO.: **A.8**

CONSTRUCTION SET



LEGEND
 INDICATES EXISTING WALL.

1 NORTH (REAR) ELEVATION
 SCALE: 3/16" = 1'-0"



2 WEST (LEFT) ELEVATION
 SCALE: 3/16" = 1'-0"

NOTES:
 REFER TO GENERAL NOTES FOR ALL TYPICAL CONSTRUCTION NOTES & DETAILS. WHEN DRAWINGS OR NOTES REFERENCE O.B.C. IN ALL CASES PLEASE REFER TO THE LATEST VERSION OF THE ONTARIO BUILDING CODE 2012.

- LEGEND:**
- (1) EXTERIOR DOOR & WINDOW TAG (SEE SCHEDULE ON A.0.a)
 - (2) DOOR TAG (SEE SCHEDULE ON A.0.a)
 - (WT) EXTERIOR WALL TYPE (SEE A.0.a)
 - (PI) INTERIOR PARTITION WALL TYPE (SEE A.0.a)
 - (F1) FLOOR TYPE (SEE A.0.a)
 - (R1) ROOF TYPE (SEE A.0.a)
 - (P1) POST TYPE (SEE A.0.a)
 - (F1) PAD FOOTING TYPE (SEE A.0.a)
 - (WF1) WALL FOOTING TYPE (SEE A.0.a)

- LEGEND CONT:**
- SMOKE/CARBON DETECTOR TO O.B.C. 9.10.19

BELL + ASSOCIATES ARCHITECTURE

4-184 John Street
 Toronto, ON M5A 1H7
 416-979-0989

101-3108 Corp Road
 Toronto, ON M9B 1E2
 416-831-9688

info@bell.ca
 bellarchitects.ca

VERSION NO. **14**
 11/23/23

SEAL:

NOTES:
 ALL CONTRACTORS MUST COMPLY WITH ALL CODES & REGULATIONS APPLICABLE TO THE PROJECT. IT IS THE RESPONSIBILITY OF THE APPROVED CONTRACTOR TO CHECK A COPY OF ALL ORDINANCES IN THE APPLICABLE JURISDICTION BEFORE THE COMMENCEMENT OF WORK.
 CONTRACTOR NOTICE - THIS DRAWING IS THE PROPERTY OF BELL + ASSOCIATES ARCHITECTURE. IT IS NOT TO BE REPRODUCED OR TRANSMITTED IN ANY FORM OR BY ANY MEANS, ELECTRONIC OR MECHANICAL, INCLUDING PHOTOCOPYING, RECORDING, OR BY ANY INFORMATION STORAGE AND RETRIEVAL SYSTEM, WITHOUT THE WRITTEN PERMISSION OF BELL + ASSOCIATES ARCHITECTURE. THE USER SHALL INDEMNIFY & HOLD HARMLESS THE DESIGNER, DESIGNER'S EMPLOYERS, AGENTS, CONSULTANTS, FROM ALL AND ANY DAMAGES, LOSSES, REVENUE, COSTS OR EXPENSES INCLUDING REASONABLE ATTORNEY'S FEES, INCURRED BY THE USER IN CONNECTION WITH THE USE OF THIS DRAWING OR ANY INFORMATION STORAGE AND RETRIEVAL SYSTEM, INCLUDING IN CONNECTION WITH THE USE OF THIS DRAWING OR ANY INFORMATION STORAGE AND RETRIEVAL SYSTEM, INCLUDING REASONABLE ATTORNEY'S FEES, INCURRED BY THE USER IN CONNECTION WITH THE USE OF THIS DRAWING OR ANY INFORMATION STORAGE AND RETRIEVAL SYSTEM.

REVISIONS		
NO.	ITEM	DATE
11	ISSUED FOR B.P.	02/17/22
12	COORDINATION	02/21/22
13	CONSTRUCTION SET	05/08/22
14	ISSUED FOR CON. DWG.	11/23/23

PROJECT: UGANDA HIGH COMMISSION

CLIENT: STITTVILLE, ONTARIO

DRAWING: REAR & LEFT ELEVATIONS

SCALE: 3/16" = 1'-0"

DRAWN BY: CB
 DATE: AUG. 8, 2022
 CHECKED BY: JB
 APPR'D BY: JB
 PROJECT NO.: 219-35
 SHEET NO.: **A.9**

CONSTRUCTION SET