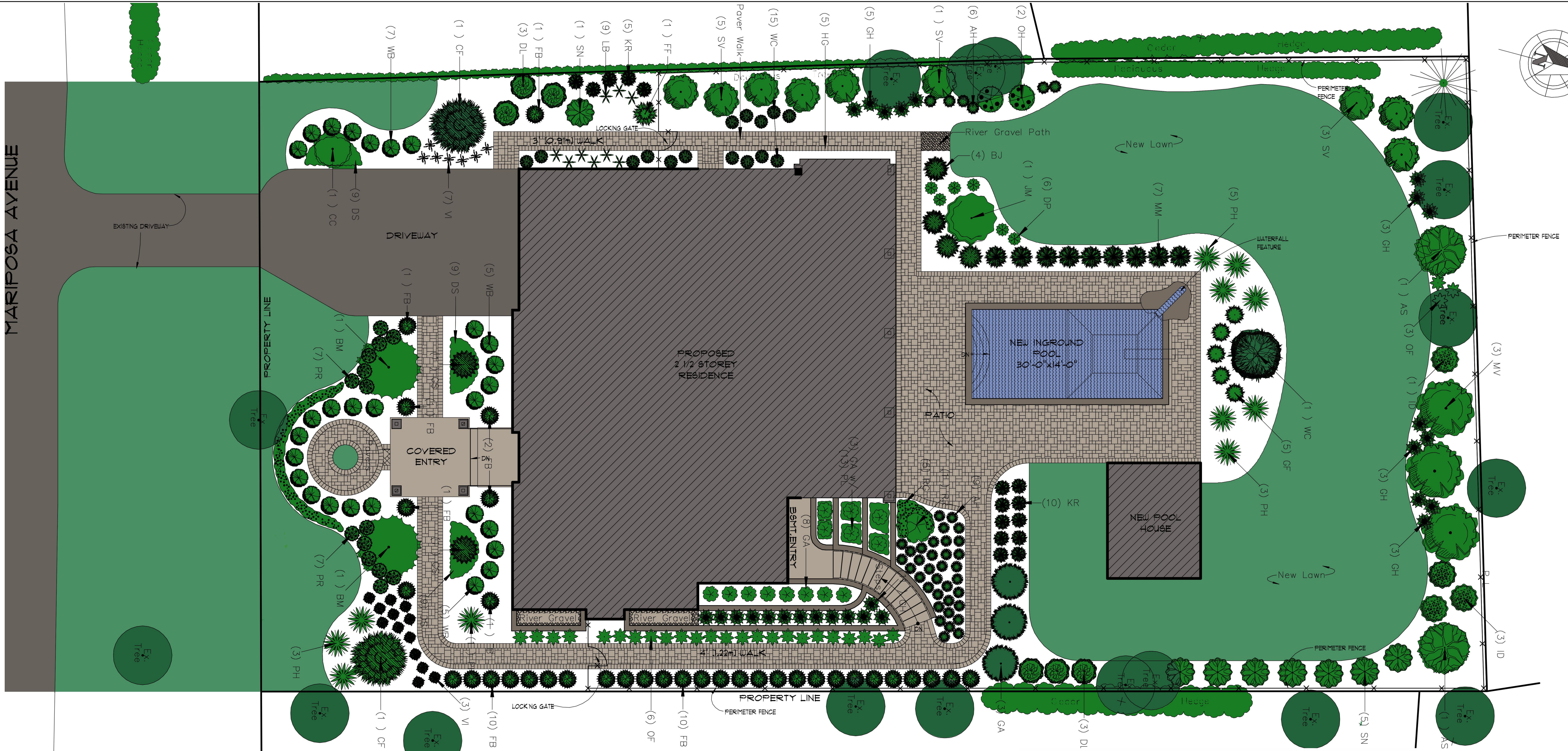
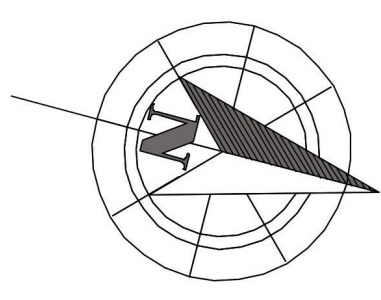
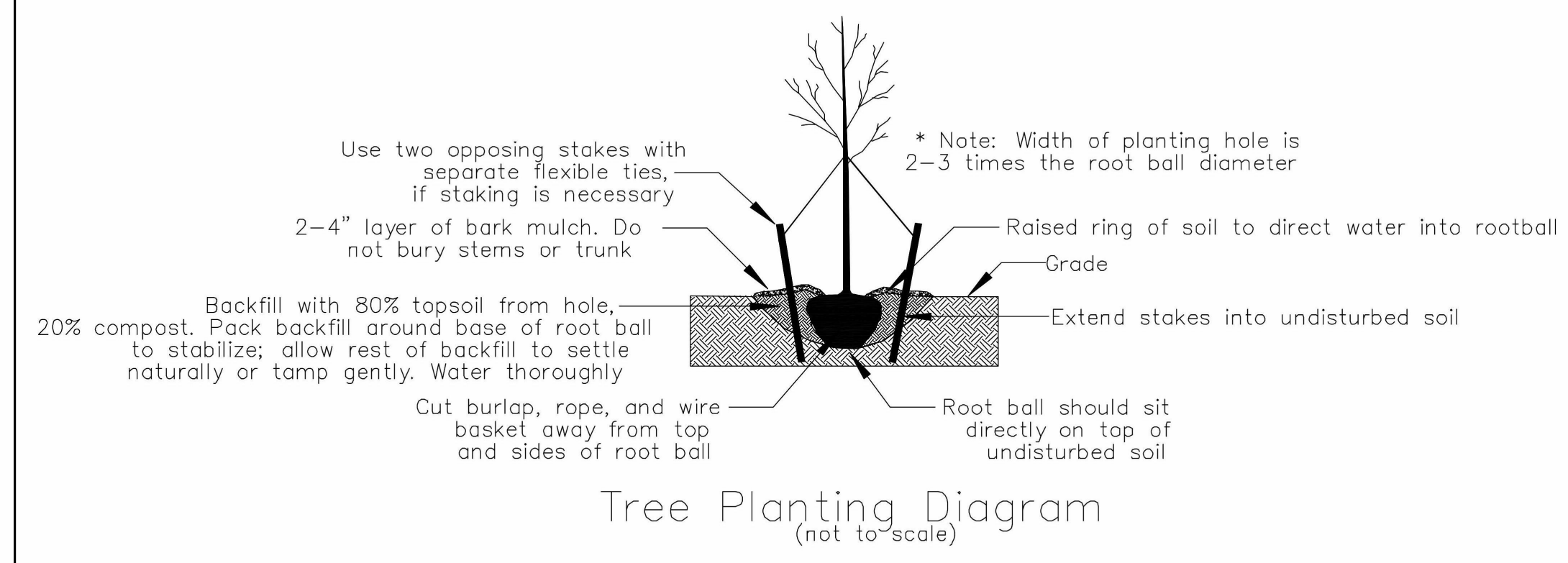


MARIPOSA AVENUE

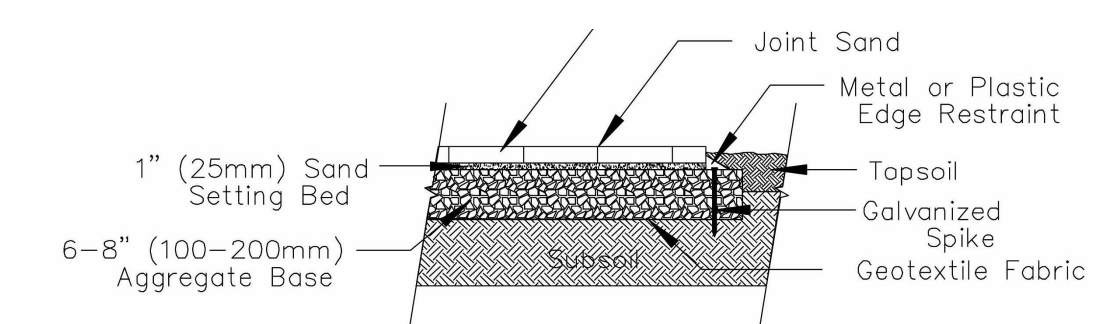


LANDSCAPE PLAN

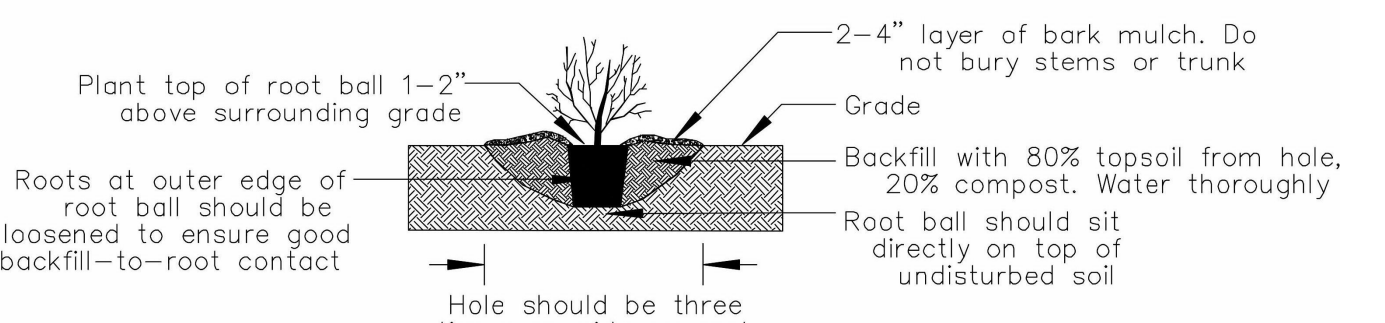
Qty	Common Name	Botanical Name	Size
2	CF - Concolor Fir	Abies concolor	6-7' B&B
2	BM - Bloodgood Japanese Maple	Acer palmatum var. dissectum 'Bloodgood'	15 Gal.
1	CC - Cinderella Crabapple	Malus x 'Cinzam'	15 Gal.
1	JM - Jane Magnolia	Magnolia x 'Jane'	15 Gal.
1	WC - Weeping Alaskan Cedar	Chamaecyparis nootkatensis	6-7' B&B
1	WP - Weeping White Pine	Pinus strobus 'Pendula'	7-8' B&B
1	RR - Ruby Falls Weeping Redbud	Cercis canadensis 'Ruby Falls'	15 Gal.
3	GA - Green Giant Arborvitae	Thuja standishii x plicata 'Green Giant'	15 Gal.
2	AS - Autumn Brilliance Serviceberry	Amelanchier x grandiflora 'Autumn Brilliance'	25 Gal.
3	WB - Winter Gem Boxwood	Buxus microphylla var. japonica 'Winter Gem'	3 Gal.
2	GS - Globe Blue Spruce	Picea pungens 'Globosa'	5 Gal.
32	FB - Fine Line Buckthorn	Rhamnus frangula 'Ron Williams'	5 Gal.
13	PR - Peach Drift Groundcover Rose	Rosa 'Meigilli'	3 Gal.
12	PH - Pinky Winky Hydrangea	Hydrangea paniculata 'DWP Pinky'	3 Gal.
6	DL - Dwarf Korean Lilac	Syringa meyeri 'Palibin'	3 Gal.
6	SW - Summer Wine Ninebark	Physocarpus opulifolius 'Seward'	3 Gal.
9	SN - Summer Snowflake Viburnum	Viburnum plicatum tomentosum 'Summer Snowflake'	5 Gal.
1	FF - Fernspray Falsecypress	Chamaecyparis obtusa 'Fillicoides'	60" B&B
11	GA - Grand's Crimson Azalea	Azalea x 'Grand's Crimson'	3 Gal.
2	OH - Alice Oakleaf Hydrangea	Hydrangea quercifolia 'Alice'	3 Gal.
7	BJ - Blue Rug Juniper	Juniperus horizontalis 'Wiltonii'	3 Gal.
5	GF - Gold Mop Falsecypress	Chamaecyparis pisifera 'Golden Mop'	3 Gal.
1	ID - Ivory Halo Dogwood	Cornus alba 'Ballinaloe'	3 Gal.
3	MV - Marie's Doublefile Viburnum	Viburnum plicatum tomentosum 'Mariesii'	5 Gal.
15	VI - Variegated Iris	Iris ensata 'Variegata'	19 cm.
15	KR - Karl Foerster Reed Grass	Calamagrostis x acutiflora 'Karl Foerster'	3 Gal.
9	LB - Little Suzy Black-Eyed Susan	Iris ensata 'Variegata'	19 cm.
27	DS - Dragon's Blood Sedum	Rudbeckia fulgida var. speciosa 'Vette's Little Suzy'	19 cm.
25	GH - Great Expectations Hosta	Hosta x 'Great Expectations'	19 cm.
5	HG - Hamelin Fountain Grass	Pennisetum alopecuroides 'Hamelin'	3 Gal.
9	OF - Ostrich Fern	Matteuccia struthiopteris	19 cm.
1	PT - Pachysandra	Pachysandra terminalis	Flats
15	AH - All Gold Hakone Grass	Hakonechloa macro 'All Gold'	19 cm.
7	MM - Morning Light Maiden Grass	Miscanthus sinensis 'Morning Light'	3 Gal.
9	DP - Dark Towers Penstemon	Penstemon 'Dark Towers'	19 cm.
15	WV - Walker's Low Catmint	Nepeta x faassenii 'Walker's Low'	19 cm.



Tree Planting Diagram (not to scale)



Walkway and Patio Paver Cross Section (not to scale)



Shrub and Perennial Planting Diagram (not to scale)

NOTES:
REFER TO GENERAL NOTES FOR ALL TYPICAL CONSTRUCTION NOTES & DETAILS. WHEN DRAWINGS OR NOTES REFERENCE O.B.C. IN ALL CASES PLEASE REFER TO THE LATEST VERSION OF THE ONTARIO BUILDING CODE 2012.

LEGEND	EXTERIOR DOOR & WINDOW TAG (SEE SCHEDULE ON A.0.a)	LEGEND CONT.	SMOKE/CARBON DETECTOR TO O.B.C. 9.10.19
(1)	EXTERIOR DOOR & WINDOW TAG (SEE SCHEDULE ON A.0.a)	SMOKE/CARBON DETECTOR TO O.B.C. 9.10.19	
(2)	DOOR TAG (SEE SCHEDULE ON A.0.a)		
(3)	EXTERIOR WALL TYPE (SEE A.0.a)		
(4)	INTERIOR PARTITION WALL TYPE (SEE A.0.a)		
(5)	FLOOR TYPE (SEE A.0.a)		
(6)	ROOF TYPE (SEE A.0.a)		
(7)	POST TYPE (SEE A.0.a)		
(8)	PAD FOOTING TYPE (SEE A.0.a)		
(9)	WALL FOOTING TYPE (SEE A.0.a)		

BELL ASSOCIATES ARCHITECTURE

13

05/22

SEAL:

NOTES:
THIS DOCUMENT IS THE PROPERTY OF BELL ASSOCIATES ARCHITECTURE. IT IS TO BE USED ONLY FOR THE PROJECT AND SITE SPECIFICALLY IDENTIFIED HEREIN. ANY REUSE OR REPRODUCTION OF THIS DOCUMENT WITHOUT THE WRITTEN PERMISSION OF BELL ASSOCIATES ARCHITECTURE IS STRICTLY PROHIBITED. THE USER SHALL BE RESPONSIBLE FOR OBTAINING ALL NECESSARY PERMITS AND APPROVALS FROM THE APPROPRIATE AUTHORITIES. THE USER SHALL BE RESPONSIBLE FOR OBTAINING ALL NECESSARY PERMITS AND APPROVALS FROM THE APPROPRIATE AUTHORITIES. THE USER SHALL BE RESPONSIBLE FOR OBTAINING ALL NECESSARY PERMITS AND APPROVALS FROM THE APPROPRIATE AUTHORITIES.

REVISIONS		
NO.	ITEM	DATE
13	CONSTRUCTION SET	05/22

PROJECT: UGANDA HIGH COMMISSION

CLIENT: STITTSVILLE, ONTARIO

DRAWING: LANDSCAPE PLAN

SCALE: AS SHOWN

DRAWN BY: Author

DATE: AUG. 8, 2022

CHECKED BY: JB

APPROVED BY: JB

PROJECT NO.: 219-35

SHEET NO.: L.1