

NOTES GÉNÉRALES / General Notes

- Ces documents d'architecture sont la propriété exclusive de NEUF architecte(s) et ne peuvent être utilisés, reproduits ou copiés sans autorisation écrite préalable. / These architectural documents are the exclusive property of NEUF architecte(s) and cannot be used, copied or reproduced without written pre-authorization.
- Les dimensions apparaissant sur ces documents doivent être vérifiées par l'entrepreneur avant le début des travaux. / All dimensions which appear on the documents must be verified by the contractor before to start the work.
- Veuillez aviser l'architecte de toute dimension en erreur et/ou divergences entre ces documents et ceux des autres professionnels. / The architect must be notified of all errors, omissions and discrepancies between these documents and those of the other professionals.
- Les dimensions sur ces documents doivent être lues et non mesurées. / The dimensions on these documents must be read and not measured.

PLANNING RATIONALE

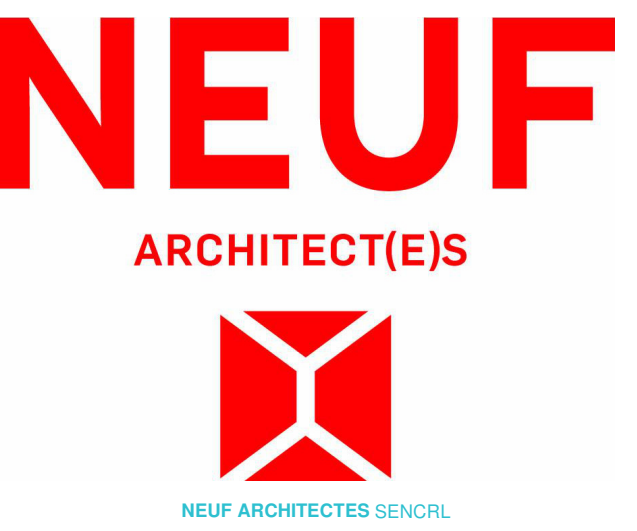
Fotenn
613 730 5709 black@fotenn.com

ARCHITECTURE DE PAYSAGE Landscape Architect
GJALA
613 286 5130 gino@gjala.com

CIVIL Civil
McIntosh Perry
613 714 6174 r.froi@mcintoshperry.com

ARCHITECTES Architect
NEUF architect(e)s SENCRL
630, boul. René-Lévesque O. 520 Étages, Montréal QC H3B 1S6
T 514 847 1117 NEUFarchitectes.com

SCEAU / Seal



CLIENT Client

KATASA
69 rue Jean-Proton, unit 301
Gatineau (Québec) J8Z 1W2

OUVRAGE Project

381 KENT STREET

EMPLACEMENT Location
OTTAWA

NO PROJET No.
12399

NO	RÉVISION	DATE (aa-mm-jj)
01	SITE PLAN CONTROL	23-02-20
02	SITE PLAN CONTROL	23-08-30

Préliminaire
NE PAS UTILISER POUR CONSTRUCTION

DESSINÉ PAR Drawn by
MM

VÉRIFIÉ PAR Checked
HG

DATE (aa.mm.jj)
23.02.20

ÉCHELLE Scale
1:200

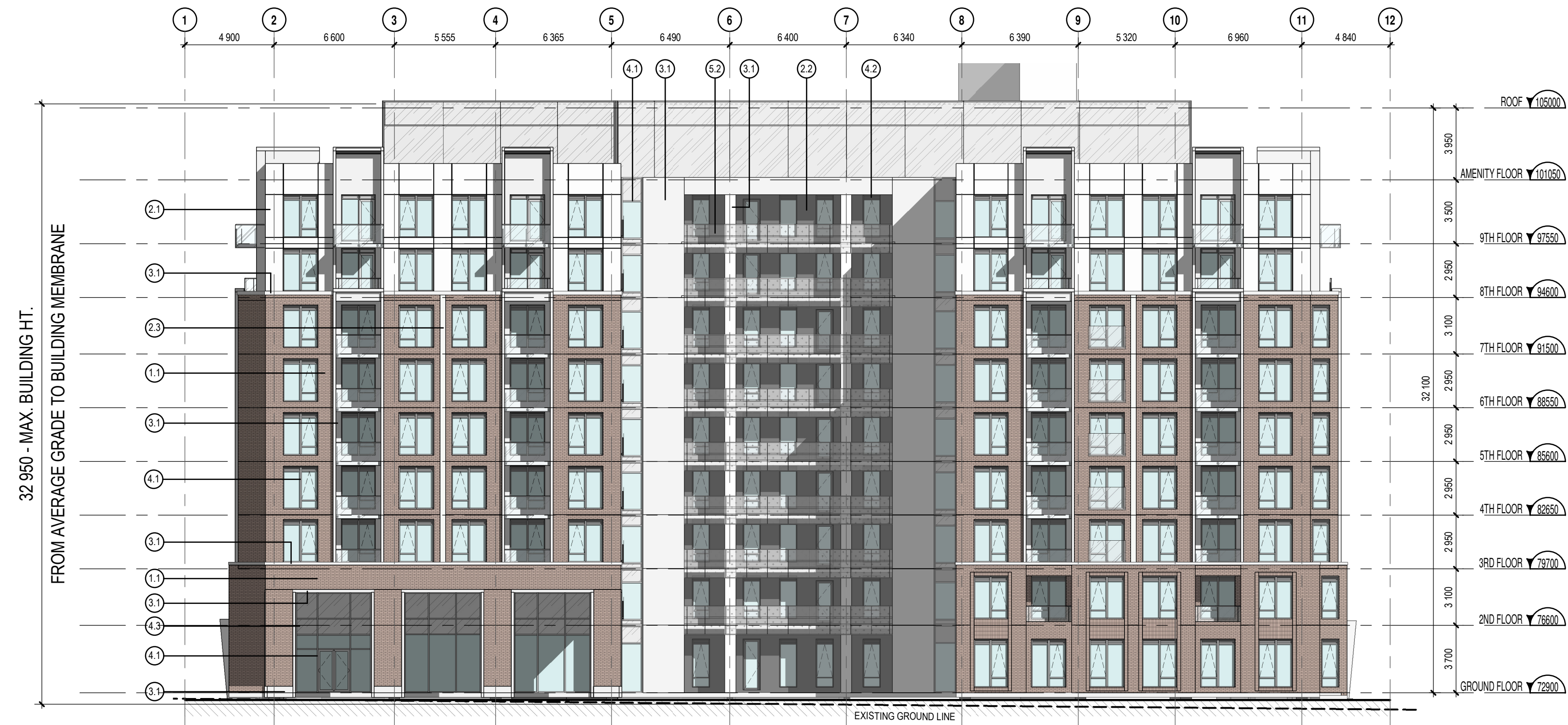
TITRE DU DESSIN Drawing Title
ELEVATIONS

RÉVISION Revision

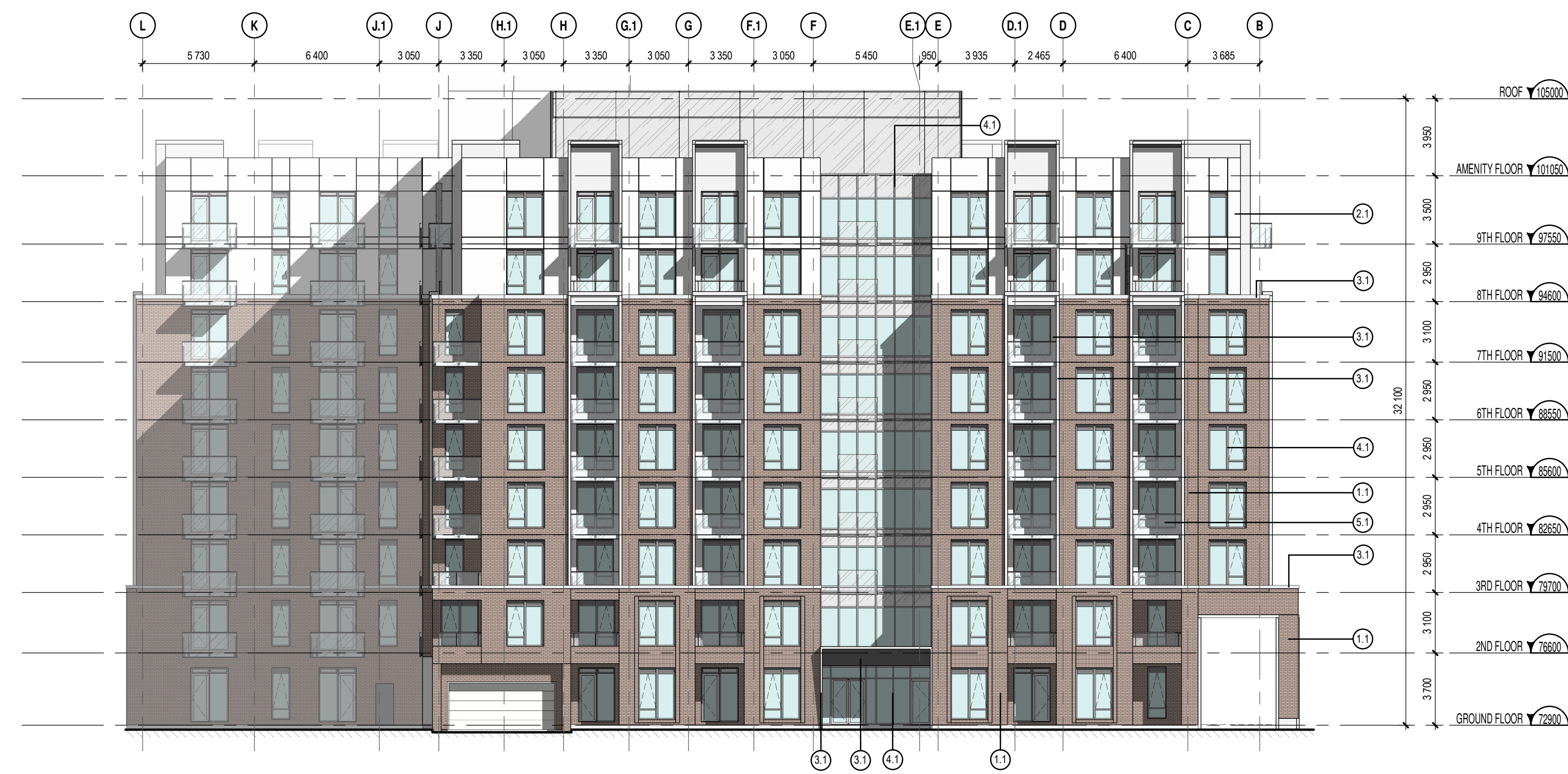
NO. DESSIN Dwg Number

SPA-07

EXTERIOR FINISHES LEGEND	
1. MASONRY	
(1.1)	BRICK PRODUCT TO BE CONFIRMED
2. METAL CLADDING	
(2.1)	PRE-PANDED ALUMINUM PANEL FINISH: OFF-WHITE (COLOR CODE TRC)
(2.2)	PRE-PANDED ALUMINUM PANEL FINISH: CHARCOAL (COLOR CODE TRC)
(2.3)	PAINTED STEEL "C" CHANNEL MOLDING FINISH: WHITE
3. CONCRETE	
(3.1)	PRECAST CONCRETE PANEL FINISH: OFF-WHITE
(3.2)	PAVING ON FOUNDATION FINISH: NATURAL
4. WINDOW, DOORS AND CURTAINS	
(4.1)	ALUMINUM FRAME FOR WINDOWS, DOORS AND CURTAIN WALLS FINISH: NEUTRAL CLEAR ANODIZED
(4.2)	ALUMINUM FRAME FOR WINDOWS, DOORS AND CURTAIN WALLS FINISH: CHARCOAL (COLOR CODE TRC)
(4.3)	GLASS SPANDREL PANEL FINISH: LIGHT GREY
(4.4)	PAINTED STEEL FRAME AND DOOR FINISH: TO MATCH THE NEUTRAL CLEAR ANODIZED ALUMINUM
5. RAILINGS AND SCREENS	
(5.1)	BALCONY RAILING TYPE 1 FINISH: NEUTRAL CLEAR ANODIZED ALUMINUM FRAME AND PATTERNED GLASS
(5.2)	BALCONY RAILING TYPE 2 FINISH: PRE-PANDED WHITE ALUMINUM FRAME AND PATTERNED GLASS



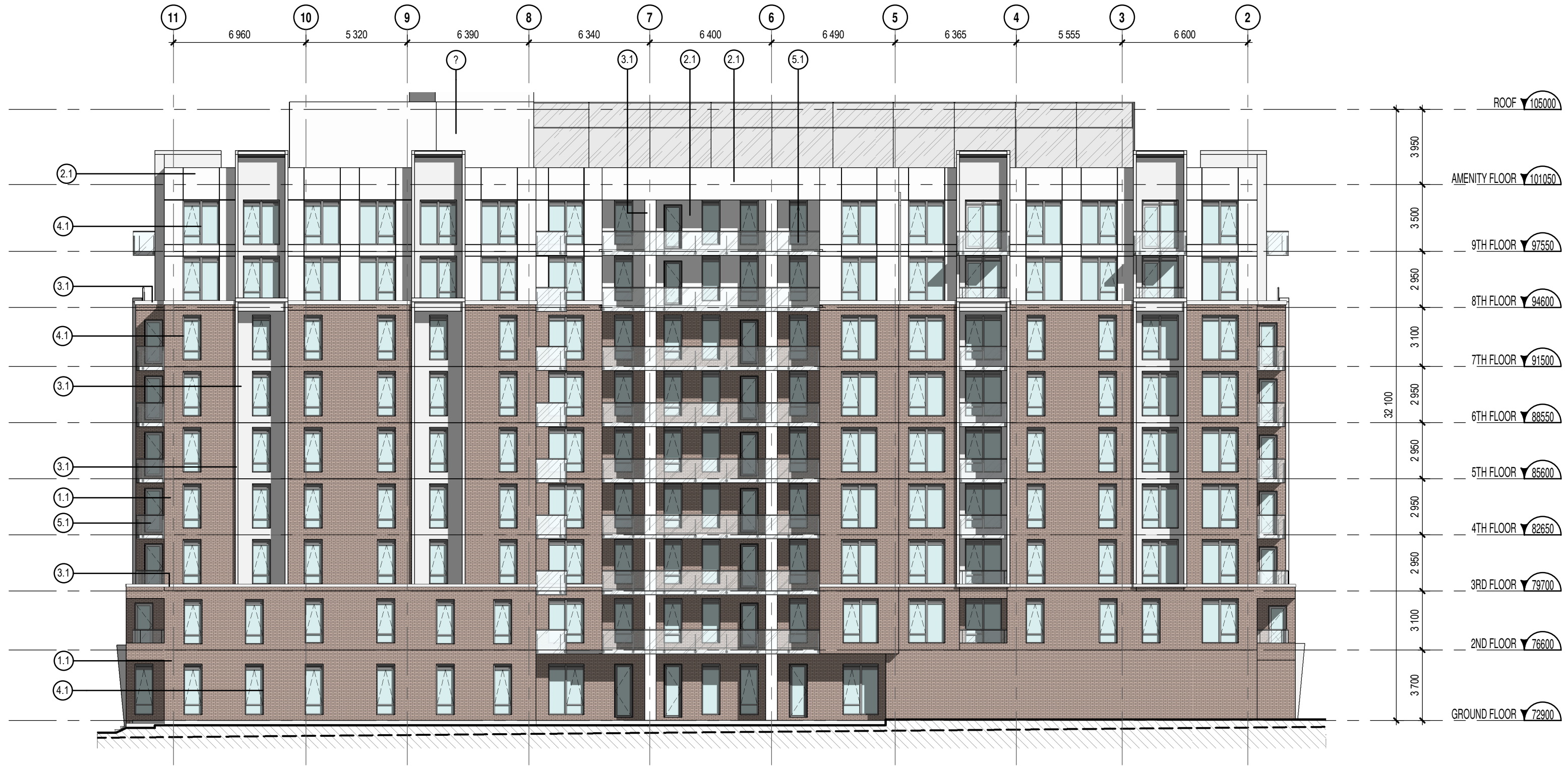
ELEVATION - KENT STREET (WEST)
1:200



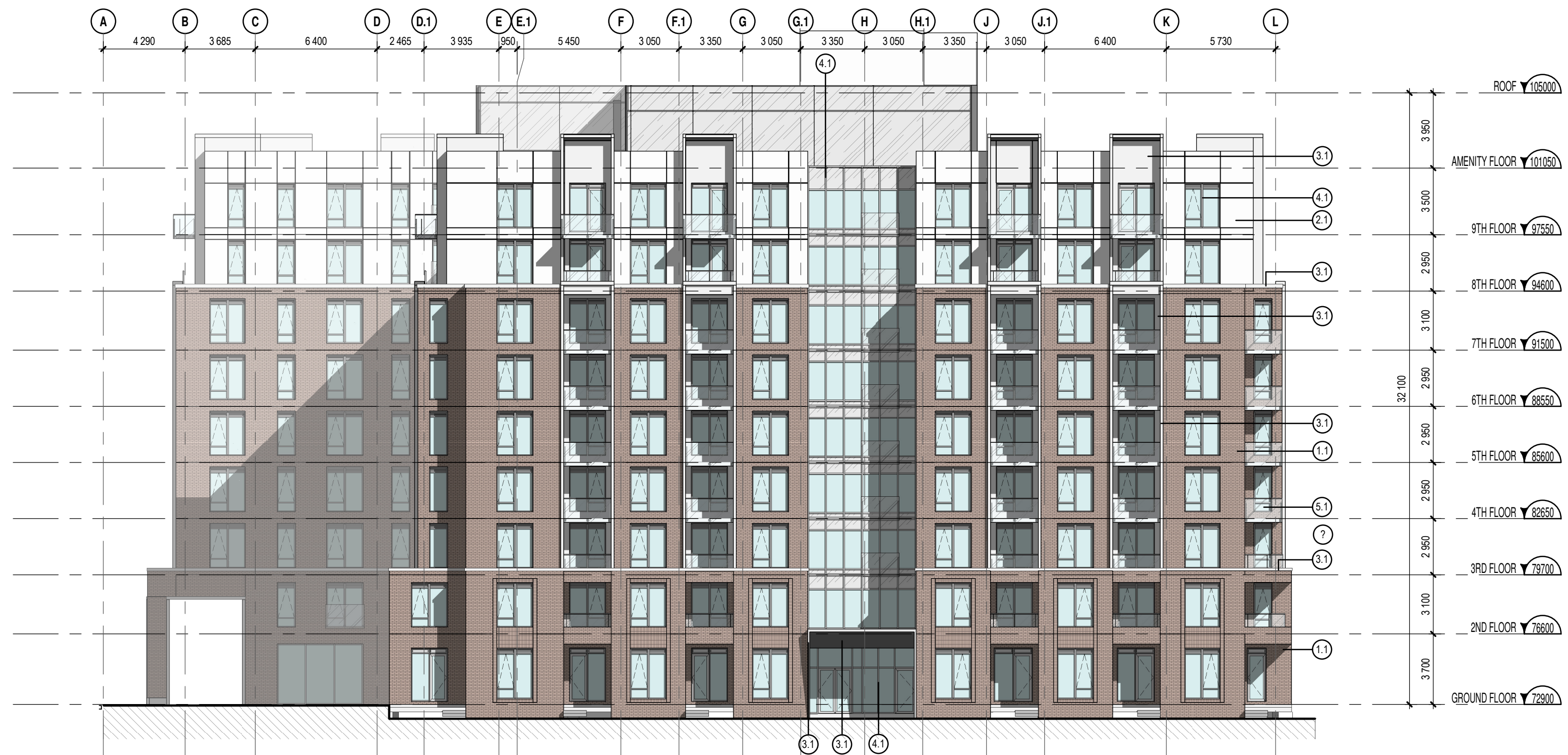
ELEVATION - GILMOUR STREET (NORTH)
1:200

C:\Fichiers Revit\Logaux\KENT_12389_ARC_INT_R22_mmadahSY9RW.rvt

EXTERIOR FINISHES LEGEND	
1. MASONRY	
1.1	BRICK PRODUCT TO BE CONFIRMED
2. METAL CLADDING	
2.1	PRE-PAINTED ALUMINUM PANEL FINISH: OFF-WHITE (COLOR CODE F8C)
2.2	PRE-PAINTED ALUMINUM PANEL FINISH: CHARCOAL (COLOR CODE F8C)
2.3	PAINTED STEEL "C" CHANNEL MOLDING FINISH: WHITE
3. CONCRETE	
3.1	PRECAST CONCRETE PANEL FINISH: OFF-WHITE
3.2	PAVING ON FOUNDATION FINISH: NATURAL
4. WINDOW, DOORS AND CURTAINS	
4.1	ALUMINUM FRAME FOR WINDOWS, DOORS AND CURTAIN WALLS FINISH: NEUTRAL CLEAR ANODIZED
4.2	ALUMINUM FRAME FOR WINDOWS, DOORS AND CURTAIN WALLS FINISH: CHARCOAL (COLOR CODE F8C)
4.3	GLASS SPANDREL PANEL FINISH: LIGHT GREY
4.4	PAINTED STEEL FRAME AND DOOR FINISH: TO MATCH THE NEUTRAL CLEAR ANODIZED ALUMINUM
5. RAILINGS AND SCREENS	
5.1	BALCONY RAILING TYPE 1 FINISH: NEUTRAL CLEAR ANODIZED ALUMINUM FRAME AND PATTERNED GLASS
5.2	BALCONY RAILING TYPE 2 FINISH: PRE-PAINTED WHITE ALUMINUM FRAME AND PATTERNED GLASS



ELEVATION (EAST)
1:200



ELEVATION - JAMES STREET (SOUTH)
1:200

NOTES GÉNÉRALES General Notes

- Ces documents d'architecture sont la propriété exclusive de NEUF architecte(s) et ne peuvent être utilisés, reproduits ou copiés sans autorisation écrite préalable. / These architectural documents are the exclusive property of NEUF architecte(s) and cannot be used, copied or reproduced without written pre-authorization.
- Les dimensions apparaissant sur ces documents doivent être vérifiées par l'entrepreneur avant le début des travaux. / All dimensions which appear on the documents must be verified by the contractor before to start the work.
- Veuillez aviser l'architecte de toute dimension erreur et/ou divergence entre ces documents et ceux des autres professionnels. / The architect must be notified of all errors, omissions and discrepancies between these documents and those of the others professionals.
- Les dimensions sur ces documents doivent être lues et non mesurées. / The dimensions on these documents must be read and not measured.

PLANNING RATIONALE
Fotenn
613 730 5709 black@fotenn.com

ARCHITECTURE DE PAYSAGE Landscape Architect
GJALA
613 286 5130 gino@gjala.com

CIVIL Civil
McIntosh Perry
613 714 6174 r.finn@mcintoshperry.com

ARCHITECTES Architect
NEUF architect(e)s SENCRL
630, St-J. Riens-Lévesque O. 520 Étages, Montréal QC H3B 1S6
T 514 847 1117 NEUFarchitectes.com

SCEAU / Seal



CLIENT Client
KATASA
69 rue Jean-Proton, unit 301
Gatineau (Québec) J8Z 1W2

OUVRAGE Project
381 KENT STREET

EMPLACEMENT Location NO PROJET No.
OTTAWA 12399

NO	RÉVISION	DATE (aa-mm-jj)
01	SITE PLAN CONTROL	23-02-20
02	SITE PLAN CONTROL	23-08-30

Préliminaire
NE PAS UTILISER POUR
CONSTRUCTION

DESSINÉ PAR Drawn by
MM VERIFIÉ PAR Checked
HG

DATE (aa.mm.jj) ÉCHELLE Scale
23.02.20 1:200

TITRE DU DESSIN Drawing Title

ELEVATIONS

RÉVISION Revision NO. DESSIN Dwg Number
SPA-08